



The Hudson | 4-BED PLAN

4 Beds | 2½ Baths | 2,172 Sq Ft*



FARMHOUSE A



COTTAGE



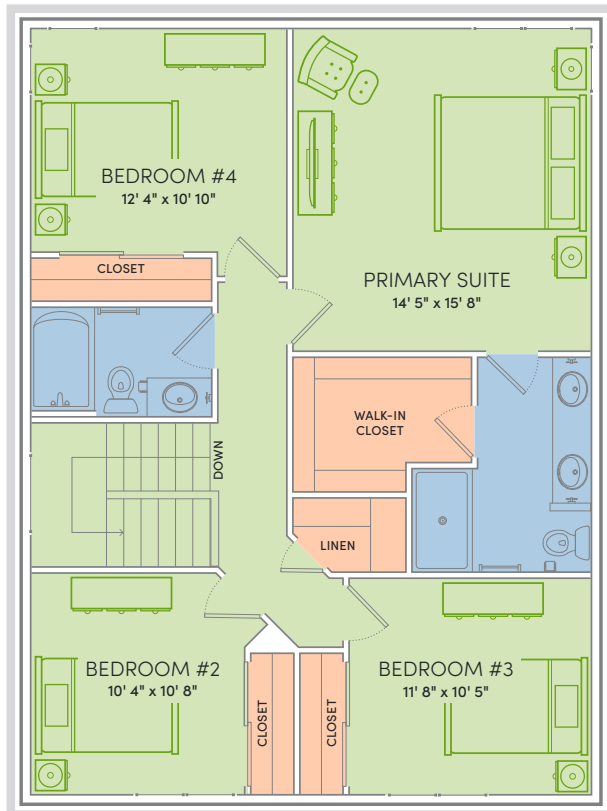
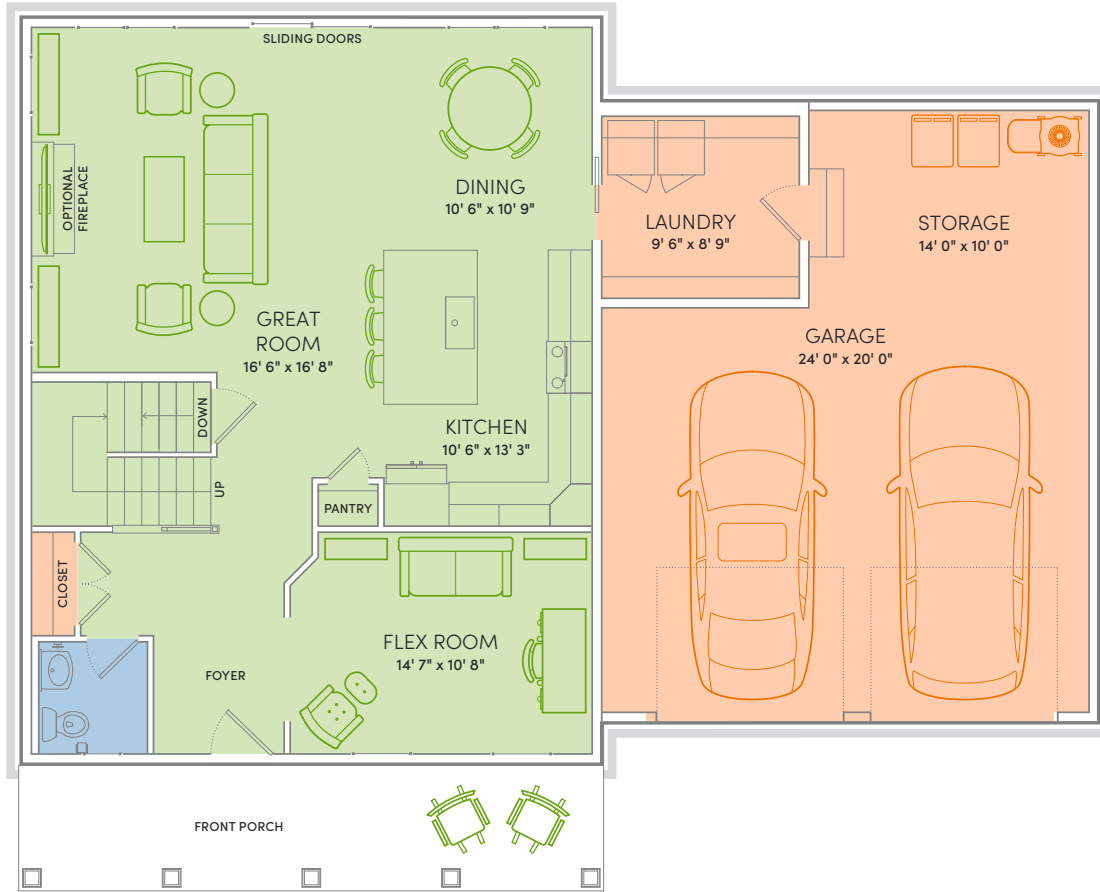
CRAFTSMAN



FARMHOUSE B

A FRONT PORCH WITH THE PERFECT PLACE FOR SETTING UP A SWING AND WATCHING THE WORLD GO BY. Wave to the UPS driver. Invite a neighbor over for a cold one. Get to know the bike-riding kids and dog-walkers by name. Of course, there are times when you just want to read a book, too. That’s why The Hudson has sliding glass doors leading to your private backyard – otherwise known as the howdy-free zone.

*Exterior design, square footage and product selections may vary by elevation and neighborhood. Image is an artistic rendering of the home; colors and features may vary.



Floor Plan Features



- Locally made, custom Auburn Ridge® cabinetry, doors, and trim crafted to last
- Quality finishes from trusted brands like Kohler®, Moen®, and Shaw®
- Stylish kitchen with island and quartz countertops
- Durable luxury vinyl plank flooring in main living areas
- Designer lighting collections curated from Kichler® and Visual Comfort & Co.
- Painted solid-core doors for sound control
- Smart Home+ technology with integrated lighting control and built-in USB connectivity
- One-year warranty for added peace of mind
- Personalize your home with thousands of Design Studio options



ENERGY EXPERT CERTIFIED
Third-party tested to certify each home meets the high standards of the Quality 360® program.



The Hudson | 3-BED PLAN

4 Beds | 2½ Baths | 2,172 Sq Ft*



FARMHOUSE A



COTTAGE



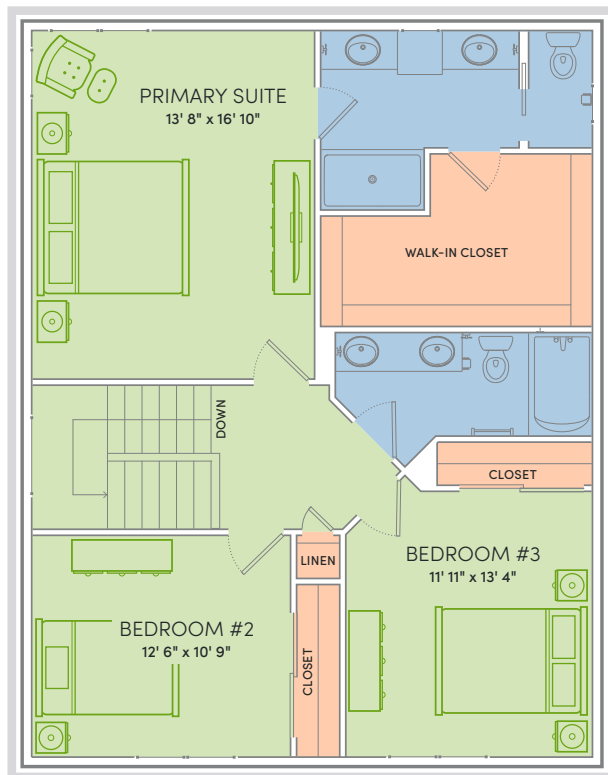
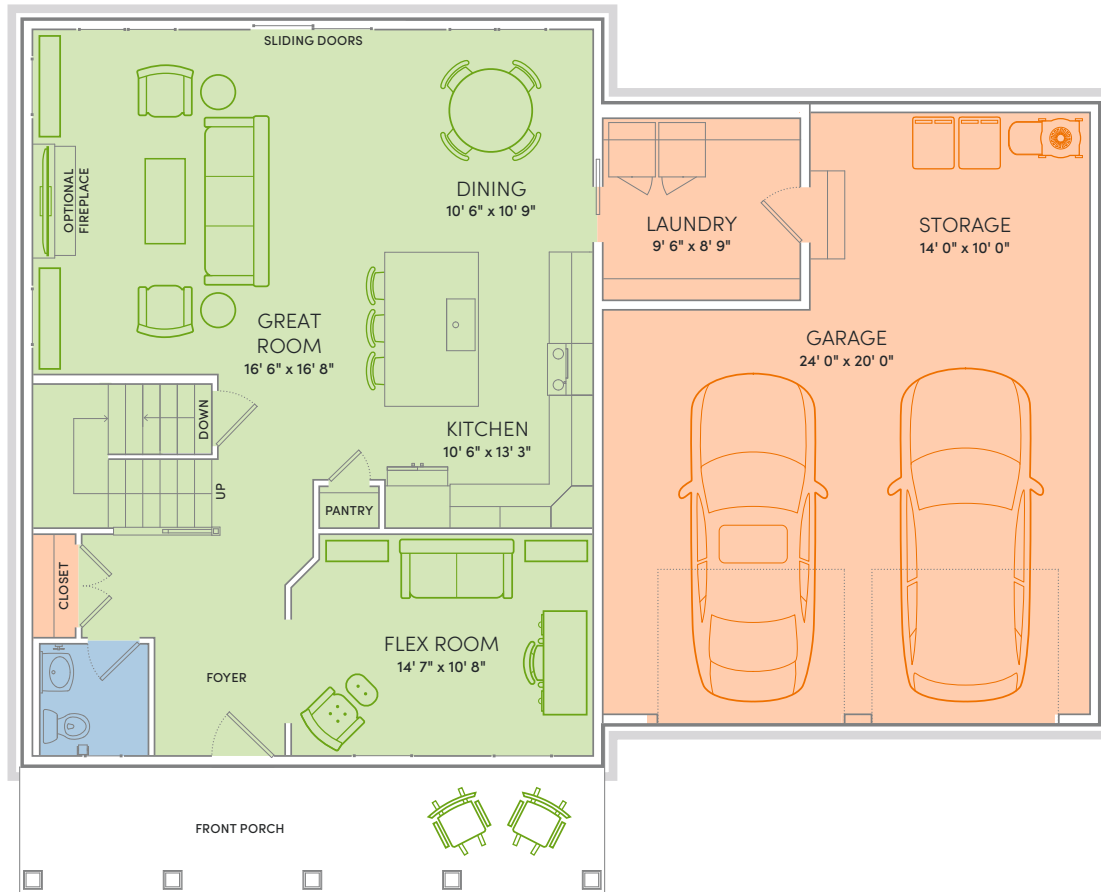
CRAFTSMAN



FARMHOUSE B

A FRONT PORCH WITH THE PERFECT PLACE FOR SETTING UP A SWING AND WATCHING THE WORLD GO BY. Wave to the UPS driver. Invite a neighbor over for a cold one. Get to know the bike-riding kids and dog-walkers by name. Of course, there are times when you just want to read a book, too. That's why The Hudson has sliding glass doors leading to your private backyard – otherwise known as the howdy-free zone.

*Exterior design, square footage and product selections may vary by elevation and neighborhood. Image is an artistic rendering of the home; colors and features may vary.



Floor Plan Features



- Locally made, custom Auburn Ridge® cabinetry, doors, and trim crafted to last
- Quality finishes from trusted brands like Kohler®, Moen®, and Shaw®
- Stylish kitchen with island and quartz countertops
- Durable luxury vinyl plank flooring in main living areas
- Designer lighting collections curated from Kichler® and Visual Comfort & Co.
- Painted solid-core doors for sound control
- Smart Home+ technology with integrated lighting control and built-in USB connectivity
- One-year warranty for added peace of mind
- Personalize your home with thousands of Design Studio options



ENERGY EXPERT CERTIFIED
Third-party tested to certify each home meets the high standards of the Quality 360® program.