



The Lexington

2-CAR
GARAGE

3 Beds | 2½ Baths | 2,263 Sq Ft*



FARMHOUSE

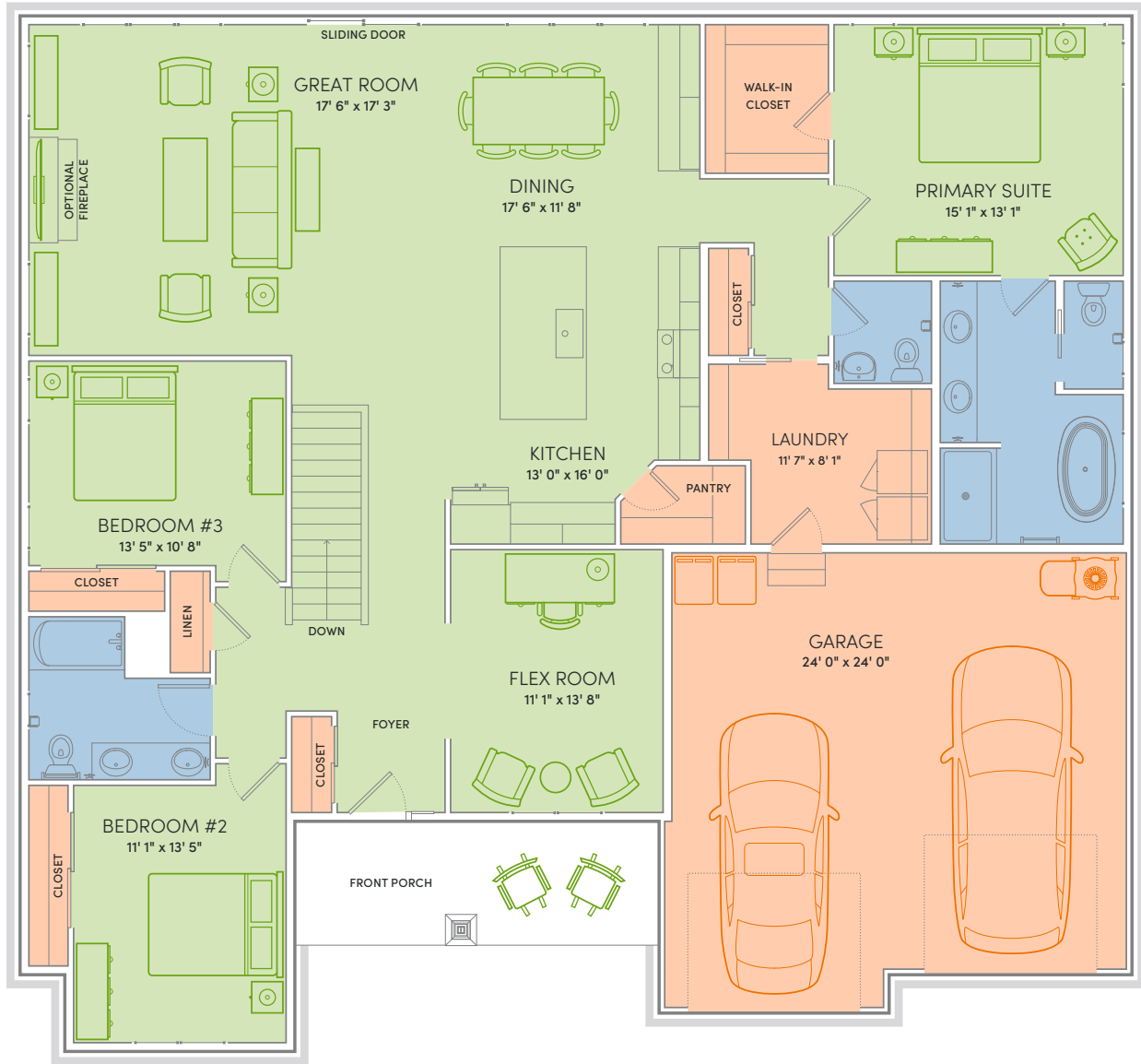


TRADITIONAL



LET THE SUN SHINE IN – The Lexington is calling. Pull open the drapes and bask in every golden ray. Sip fresh OJ at the kitchen island, then slip into a steamy soak with your morning coffee in hand. Guests won't mind waking up early when the smell of your legendary waffle batter fills the air. Welcome to the Lexington, where refined comfort and warm hospitality go hand in hand.

*Exterior design, square footage and product selections may vary by elevation and neighborhood. Image is an artistic rendering of the home; colors and features may vary.



Floor Plan Features



- Locally made, custom Auburn Ridge® cabinetry, doors, and trim crafted to last
- Quality finishes from trusted brands like Kohler®, Moen®, and Shaw®
- Stylish kitchen with island and quartz countertops
- Luxury vinyl plank flooring in main living areas
- Designer lighting collections curated from Kichler® and Visual Comfort & Co.
- Painted solid-core doors for sound control
- Smart Home+ technology with integrated lighting
- One-year warranty for added peace of mind



ENERGY EXPERT CERTIFIED

Every Veridian home is tested by a third-party to certify it meets the high standards of the Quality 360® program.



The Lexington

3 - CAR FRONT
LOAD GARAGE

3 Beds | 2½ Baths | 2,263 Sq Ft*



FARMHOUSE

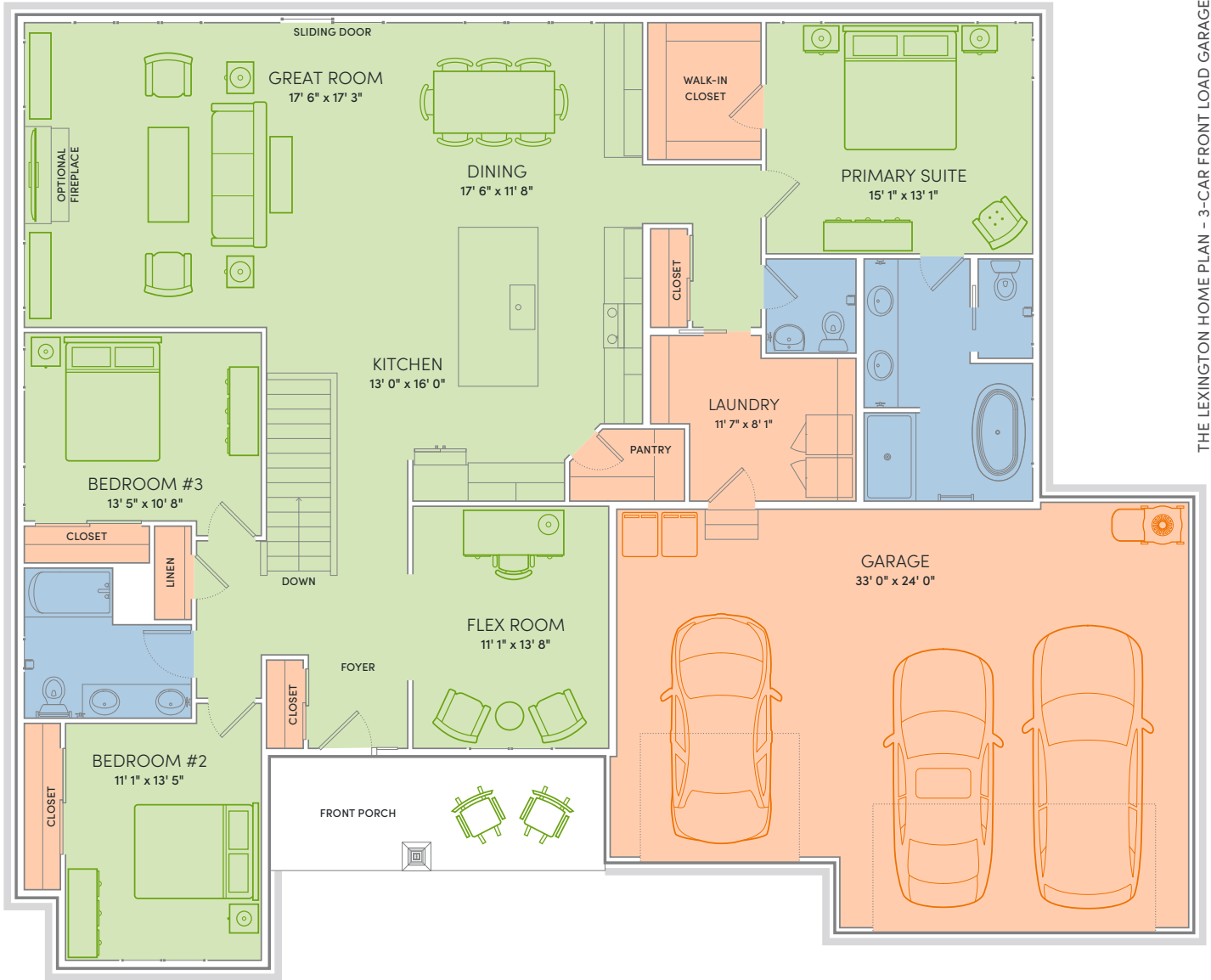


TRADITIONAL



LET THE SUN SHINE IN – The Lexington is calling. Pull open the drapes and bask in every golden ray. Sip fresh OJ at the kitchen island, then slip into a steamy soak with your morning coffee in hand. Guests won't mind waking up early when the smell of your legendary waffle batter fills the air. Welcome to the Lexington, where refined comfort and warm hospitality go hand in hand.

*Exterior design, square footage and product selections may vary by elevation and neighborhood. Image is an artistic rendering of the home; colors and features may vary.



Floor Plan Features



- Locally made, custom Auburn Ridge® cabinetry, doors, and trim crafted to last
- Quality finishes from trusted brands like Kohler®, Moen®, and Shaw®
- Stylish kitchen with island and quartz countertops
- Durable luxury vinyl plank flooring in main living areas
- Designer lighting collections curated from Kichler® and Visual Comfort & Co.
- Painted solid-core doors for superior sound control
- Smart Home+ technology with integrated lighting
- One-year warranty for added peace of mind



ENERGY EXPERT CERTIFIED

Every Veridian home is tested by a third-party to certify it meets the high standards of the Quality 360® program.

*Actual floor plans and elevations may differ from those shown based on modifications, options and improvements to the plans by the builder. The information, text and graphics provided herein are provided by Veridian Homes as a convenience to its customers. Veridian Homes does not warrant the accuracy or completeness of the information, text, graphics and other items contained on this collateral or any other collateral. All prices, promotions and specifications are subject to change at any time without notice based on the discretion of Veridian Homes. © 2026 Veridian Homes, LLC. VH9020 05/26



The Lexington

3 Beds | 2½ Baths | 2,263 Sq Ft*

3 – CAR SIDE
ENTRY GARAGE



VERIDIAN
HOMES

FARMHOUSE

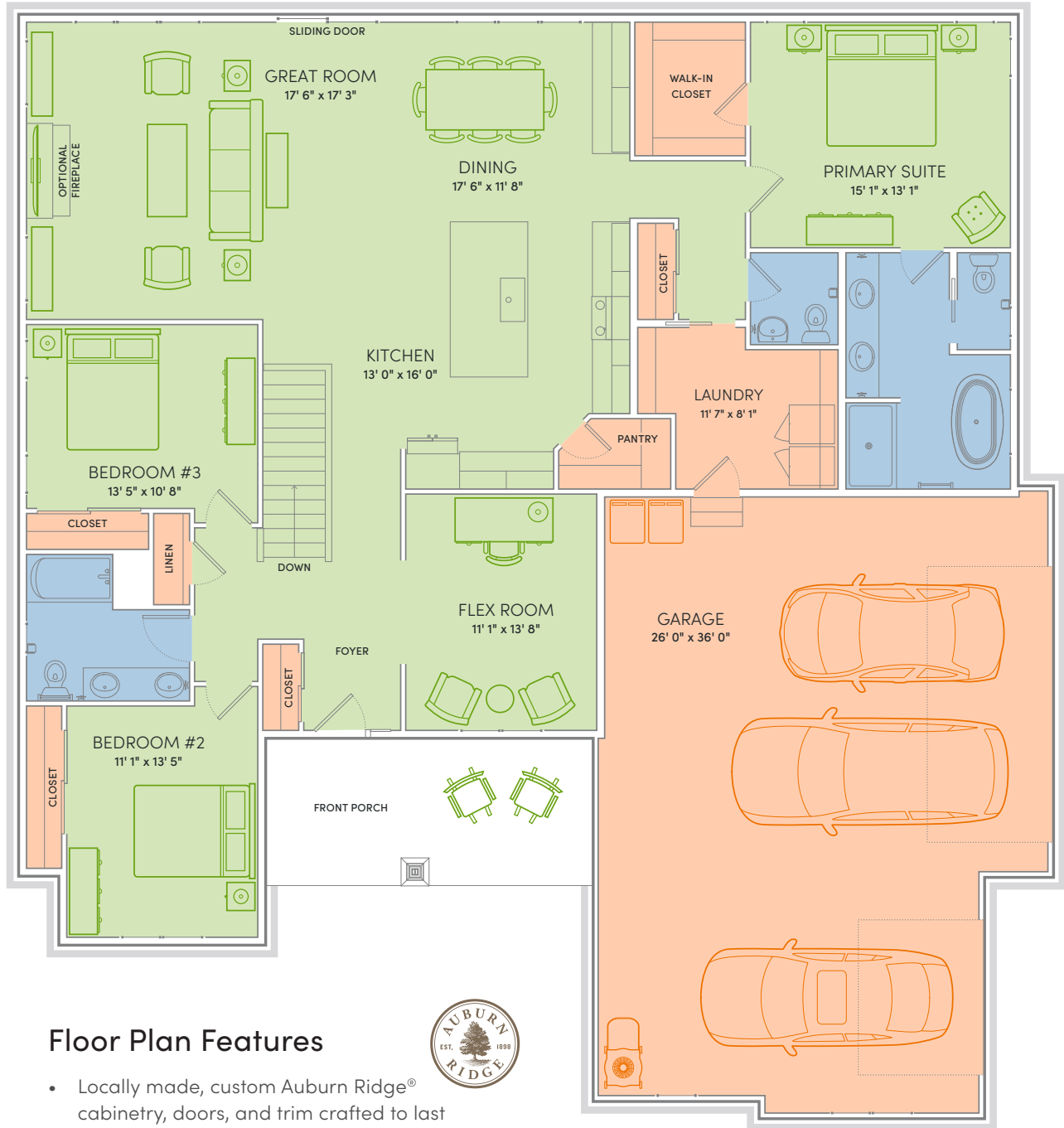


TRADITIONAL



LET THE SUN SHINE IN – The Lexington is calling. Pull open the drapes and bask in every golden ray. Sip fresh OJ at the kitchen island, then slip into a steamy soak with your morning coffee in hand. Guests won't mind waking up early when the smell of your legendary waffle batter fills the air. Welcome to the Lexington, where refined comfort and warm hospitality go hand in hand.

*Exterior design, square footage and product selections may vary by elevation and neighborhood. Image is an artistic rendering of the home; colors and features may vary.



Floor Plan Features



- Locally made, custom Auburn Ridge[®] cabinetry, doors, and trim crafted to last
- Quality finishes from trusted brands like Kohler[®], Moen[®], and Shaw[®]
- Stylish kitchen with island and quartz countertops
- Luxury vinyl plank flooring in main living areas
- Designer lighting collections curated from Kichler[®] and Visual Comfort & Co.
- Painted solid-core doors for sound control
- Smart Home+ technology with integrated lighting
- One-year warranty for added peace of mind



ENERGY EXPERT CERTIFIED
 Every Veridian home is tested by a third-party to certify it meets the high standards of the Quality 360[®] program.