



# The Julian

3 Beds | 2 Baths | 1,720 Sq Ft\*



COTTAGE A

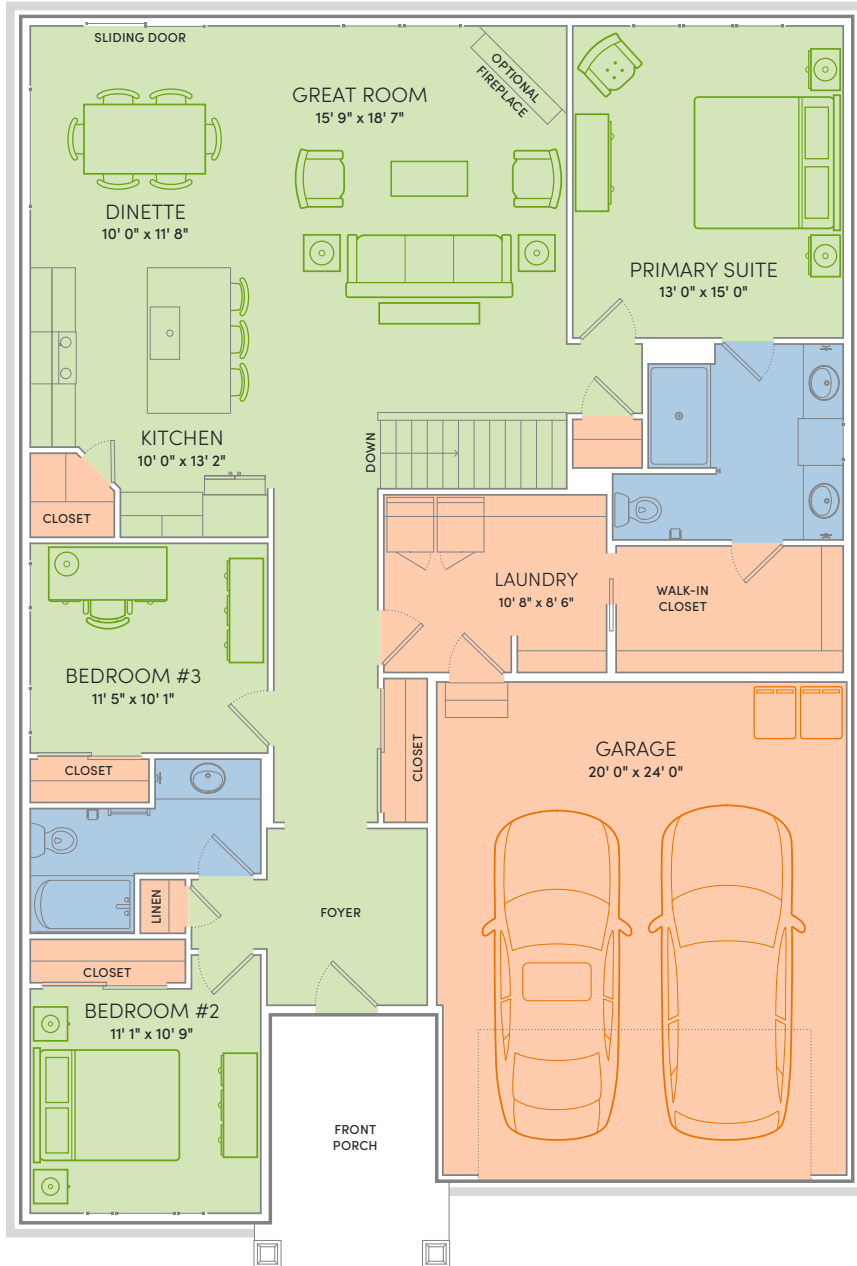


COTTAGE B



THIS YEAR, THE HOLIDAYS ARE HAPPENING AT YOUR HOUSE, and The Julian is ready for every moment. The island is filled with your favorite recipes, the table is beautifully set, and fresh linens await overnight guests. From lively gatherings to quiet traditions, The Julian creates the perfect backdrop for making memories in a home that feels unmistakably you. Welcome home to The Julian.

\*Exterior design, square footage and product selections may vary by elevation and neighborhood. Image is an artistic rendering of the home; colors and features may vary.



## Floor Plan Features



- Locally made, custom Auburn Ridge<sup>®</sup> cabinetry, doors, and trim
- Quality finishes from trusted brands like Kohler<sup>®</sup>, Moen<sup>®</sup>, and Shaw<sup>®</sup>
- Stylish kitchen with island and quartz countertops
- Durable luxury vinyl plank flooring in main living areas
- Designer lighting collections curated from Kichler<sup>®</sup> and Visual Comfort & Co.
- Painted solid-core doors
- Smart Home+ technology with integrated lighting control
- One-year warranty for peace of mind
- Personalize your home with thousands of Design Studio options



**ENERGY EXPERT CERTIFIED**  
 Third-party tested to certify each home meets the high standards of the Quality 360<sup>®</sup> program.