



# The Conrad

2-CAR GARAGE

3 Beds | 2 Baths | 1,974 Sq Ft\*



COTTAGE



CRAFTSMAN



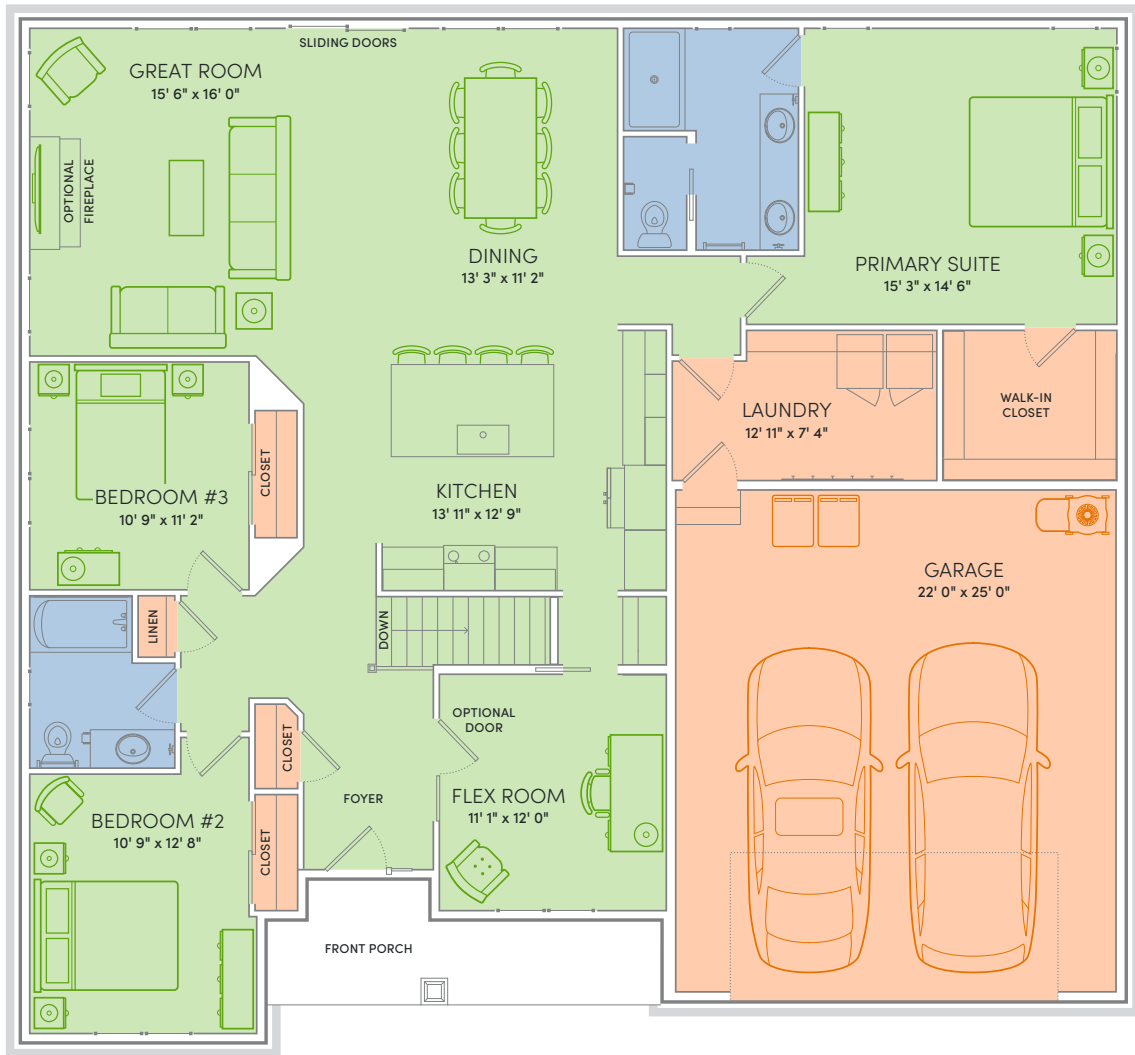
PRAIRIE



TRADITIONAL

WHEN YOU BECOME A HOMEOWNER OF THE CONRAD, you may feel as though you're on vacation even when it's just a night home from work. The open and airy floor plan makes everyday life just a bit simpler to take on. After all, doing the laundry isn't so bad, when you're just steps away from your favorite bottle of wine on the kitchen island. The Conrad is practical, yet luxurious, and that's why we love it. We think you will too.

\*Exterior design, square footage and product selections may vary by elevation and neighborhood. Image is an artistic rendering of the home; colors and features may vary.



## Floor Plan Features



- Locally made, custom Auburn Ridge® cabinetry, doors, and trim crafted to last
- Quality finishes from trusted brands like Kohler®, Moen®, and Shaw®
- Stylish kitchen with island and quartz countertops
- Durable luxury vinyl plank flooring in main living areas
- Designer lighting collections curated from Kichler® and Visual Comfort & Co.
- Painted solid-core doors for superior sound control
- Smart Home+ technology with integrated lighting control and built-in USB connectivity
- One-year warranty for added peace of mind
- Personalize your home in our Design Studio



ENERGY EXPERT CERTIFIED

Every Veridian home is tested by a third-party to certify it meets the high standards of the Quality 360® program.



# The Conrad

3-CAR FRONT  
LOAD GARAGE

3 Beds | 2 Baths | 1,974 Sq Ft\*



COTTAGE



CRAFTSMAN



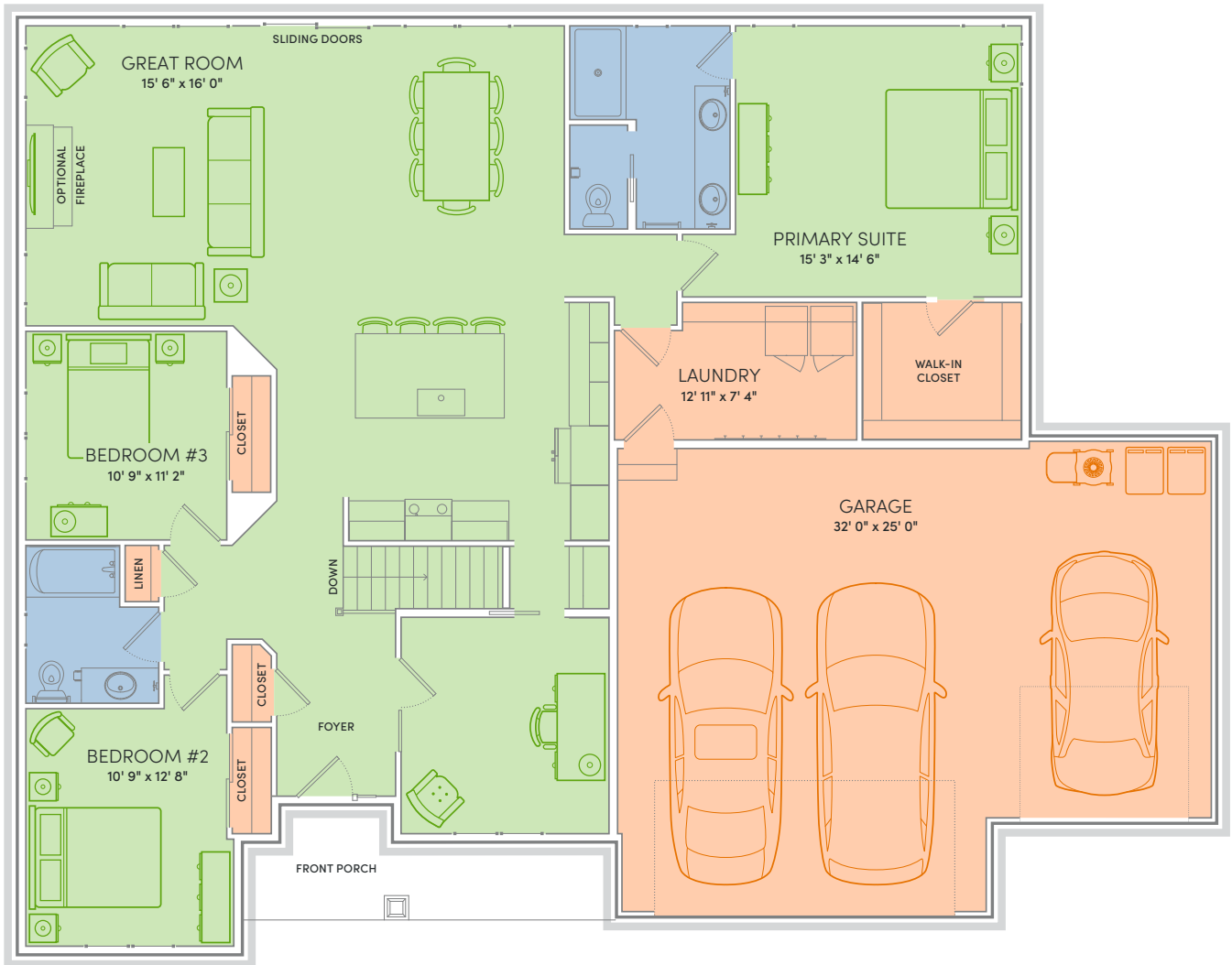
PRAIRIE



TRADITIONAL

WHEN YOU BECOME A HOMEOWNER OF THE CONRAD, you may feel as though you're on vacation even when it's just a night home from work. The open and airy floor plan makes everyday life just a bit simpler to take on. After all, doing the laundry isn't so bad, when you're just steps away from your favorite bottle of wine on the kitchen island. The Conrad is practical, yet luxurious, and that's why we love it. We think you will too.

\*Exterior design, square footage and product selections may vary by elevation and neighborhood. Image is an artistic rendering of the home; colors and features may vary.



## Floor Plan Features



- Locally made, custom Auburn Ridge® cabinetry, doors, and trim crafted to last
- Quality finishes from trusted brands like Kohler®, Moen®, and Shaw®
- Stylish kitchen with island and quartz countertops
- Durable luxury vinyl plank flooring in main living areas
- Designer lighting collections curated from Kichler® and Visual Comfort & Co.
- Painted solid-core doors for superior sound control
- Smart Home+ technology with integrated lighting control and built-in USB connectivity
- One-year warranty for added peace of mind
- Personalize your home in our Design Studio



### ENERGY EXPERT CERTIFIED

Every Veridian home is tested by a third-party to certify it meets the high standards of the Quality 360® program.



# The Conrad

3 - CAR SIDE  
ENTRY GARAGE

3 Beds | 2 Baths | 1,974 Sq Ft\*



COTTAGE



CRAFTSMAN



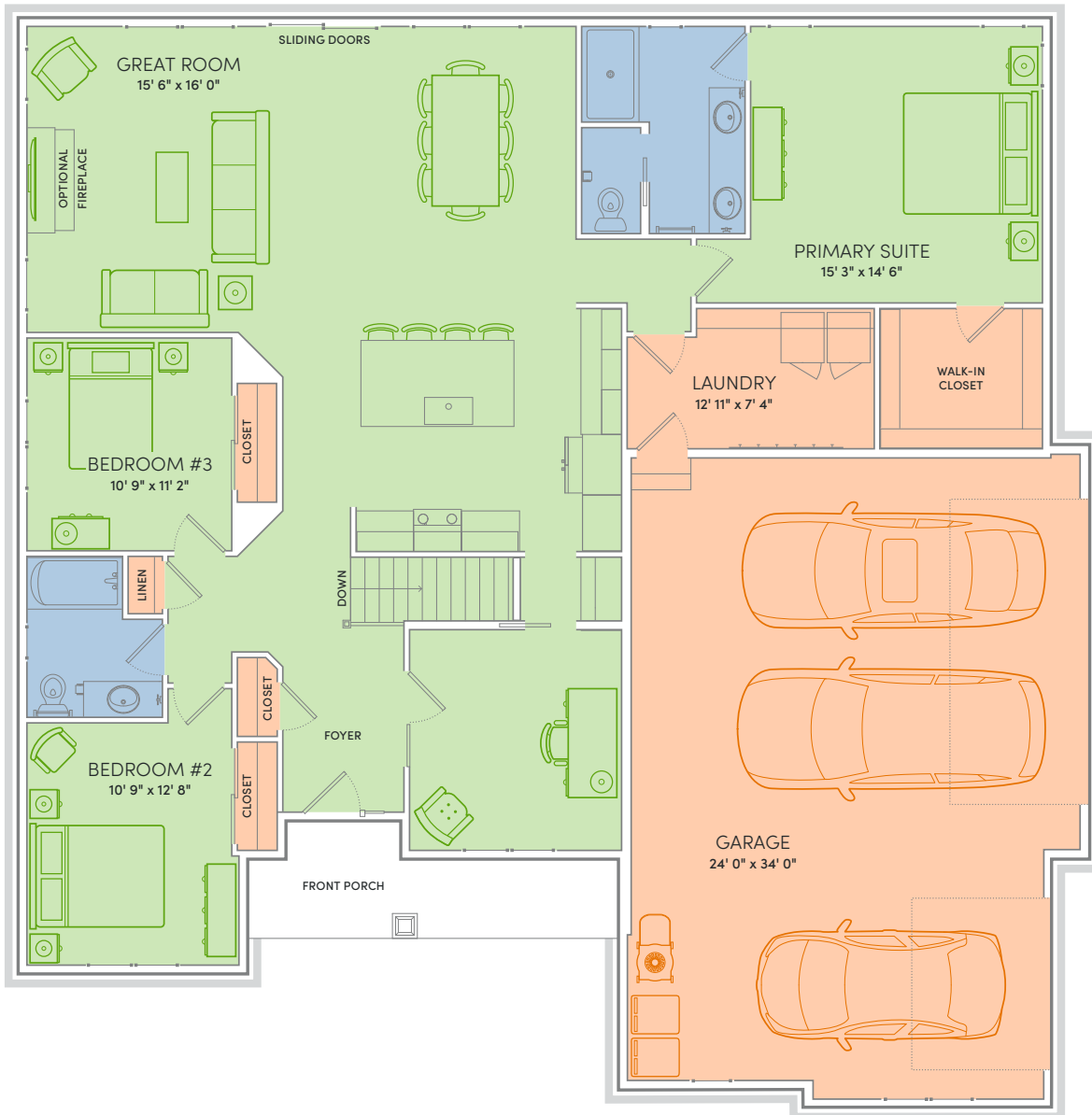
PRAIRIE



TRADITIONAL

WHEN YOU BECOME A HOMEOWNER OF THE CONRAD, you may feel as though you're on vacation even when it's just a night home from work. The open and airy floor plan makes everyday life just a bit simpler to take on. After all, doing the laundry isn't so bad, when you're just steps away from your favorite bottle of wine on the kitchen island. The Conrad is practical, yet luxurious, and that's why we love it. We think you will too.

\*Exterior design, square footage and product selections may vary by elevation and neighborhood. Image is an artistic rendering of the home; colors and features may vary.



## Floor Plan Features



- Locally made, custom Auburn Ridge<sup>®</sup> cabinetry, doors, and trim crafted to last
- Quality finishes from trusted brands like Kohler<sup>®</sup>, Moen<sup>®</sup>, and Shaw<sup>®</sup>
- Stylish kitchen with island and quartz countertops
- Durable luxury vinyl plank flooring in main living areas
- Designer lighting collections curated from Kichler<sup>®</sup> and Visual Comfort & Co.
- Painted solid-core doors for superior sound control
- Smart Home+ technology with integrated lighting control and built-in USB connectivity
- One-year warranty for added peace of mind
- Personalize your home in our Design Studio



**ENERGY EXPERT CERTIFIED**  
Third-party tested to certify each home meets the high standards of the Quality 360<sup>®</sup> program.