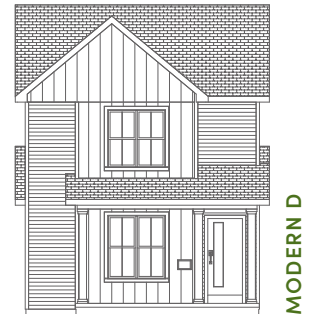




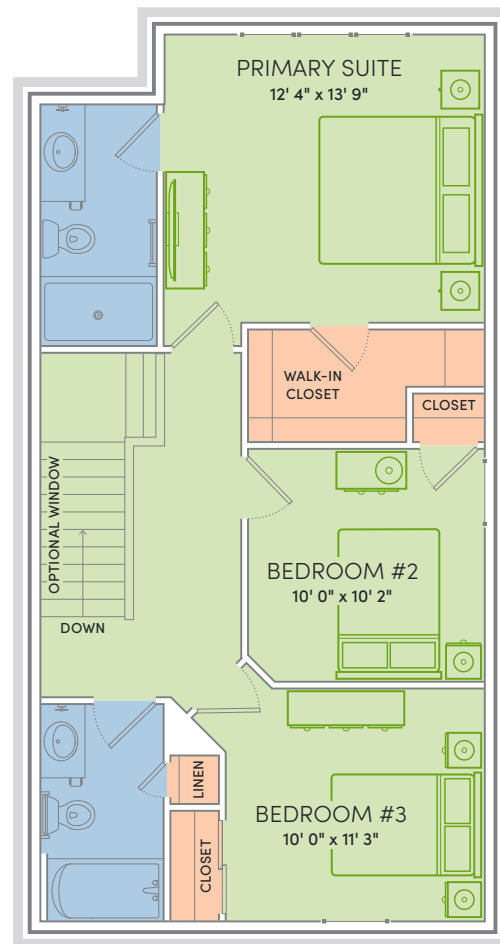
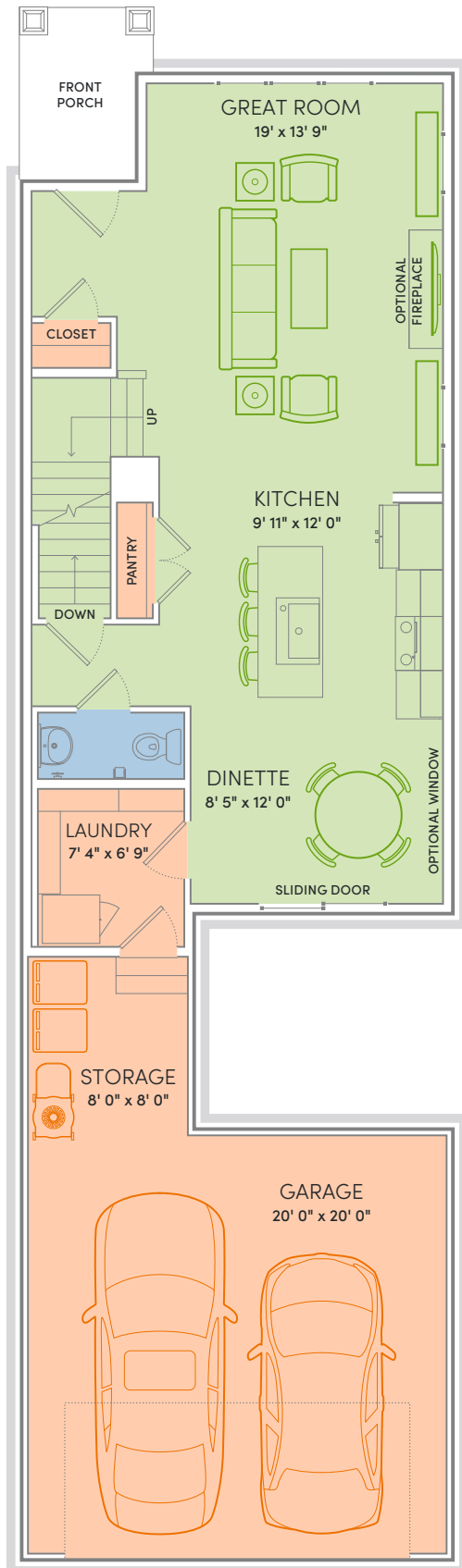
The Tribeca

3 Beds | 2½ Baths | 1,533 Sq Ft*



EGGS SUNNY SIDE UP, AT THE SUNNIEST BREAKFAST NOOK AROUND. Your breakfast nook. Yes, even the coffee tastes better while sipped slowly on the sofa that is anchoring your spacious great room. Why don't you head on upstairs and grab the coziest robe you can find from your walk-in closet and then enjoy a quick read of the newspaper while out on your front porch. Because this really is all yours. Enjoy life in The Tribeca.

*Exterior design, square footage and product selections may vary by elevation and neighborhood. Image is an artistic rendering of the home; colors and features may vary.



Floor Plan Features



- Locally made, custom Auburn Ridge[®] cabinetry, doors, and trim crafted to last
- Quality finishes from trusted brands like Kohler[®], Moen[®], and Shaw[®]
- Stylish kitchen with island and quartz countertops
- Durable luxury vinyl plank flooring in main living areas
- Designer lighting collections curated from Kichler[®] and Visual Comfort & Co.
- Painted solid-core doors for superior sound control
- Smart Home+ technology with integrated lighting control
- One-year warranty for added peace of mind
- Personalize your home on our Design Studio



ENERGY EXPERT CERTIFIED

Every Veridian home is tested by a third-party to certify it meets the high standards of the Quality 360[®] program.