



The Jade

3 Beds | 2½ Baths | 1,526 Sq Ft*



CALIFORNIA
BUNGALOW



COTTAGE



COTTAGE II



FARMHOUSE



FARMHOUSE B



MODERN B

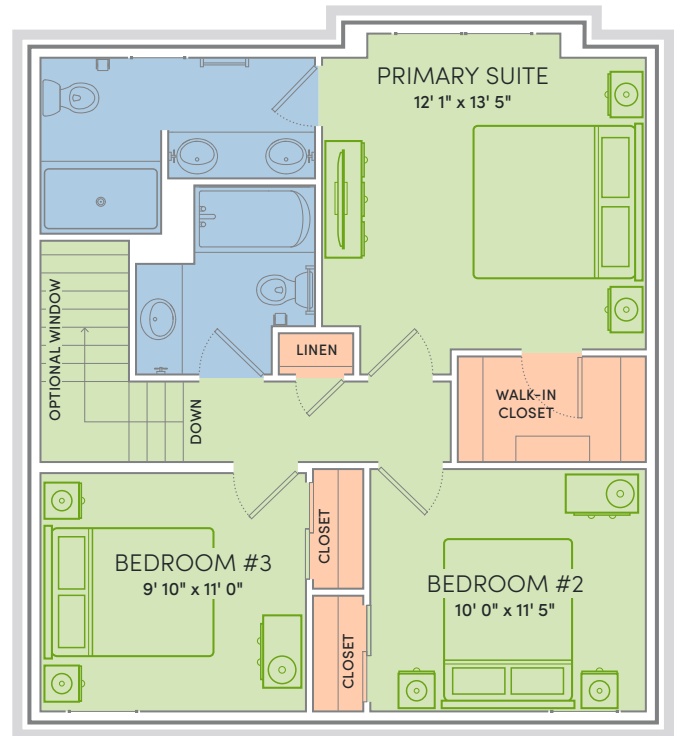
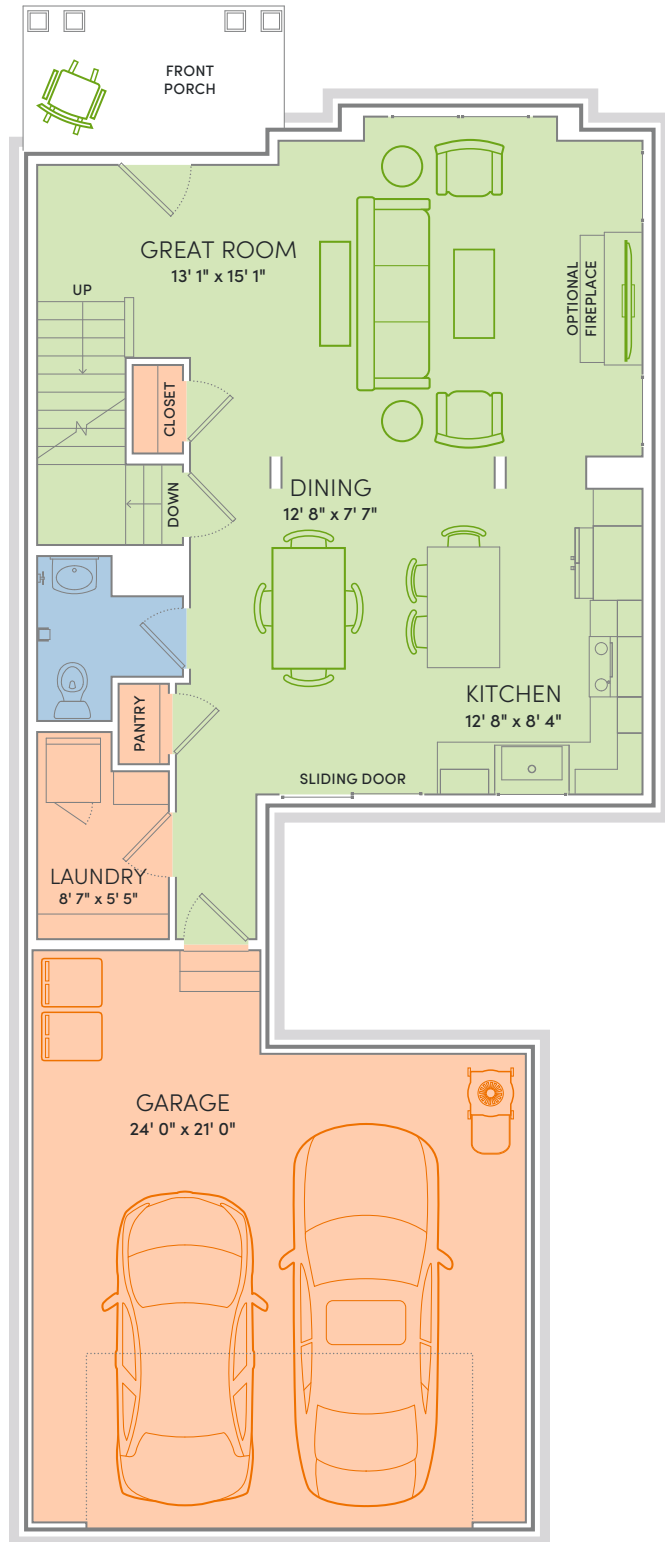


VICTORIAN

ROOMS DRENCHED IN NATURAL LIGHT SET THE TONE FROM THE MOMENT YOU STEP INSIDE — bright, open, and effortlessly inviting. A kitchen as distinctive as your style blends elevated design with everyday function, ready for weeknight dinners, weekend brunches, and everything in between. It's calm, comfortable, and designed for the kind of living that never rushes. Welcome to the Jade—a home that can appreciate the finer things in life.

*Exterior design, square footage and product selections may vary by elevation and neighborhood. Image is an artistic rendering of the home; colors and features may vary.

THE JADE HOME PLAN



Floor Plan Features



- Locally made, custom Auburn Ridge® cabinetry, doors, and trim crafted to last
- Quality finishes from trusted brands like Kohler®, Moen®, and Shaw®
- Stylish kitchen with island and quartz countertops
- Durable luxury vinyl plank flooring in main living areas
- Designer lighting collections curated from Kichler® and Visual Comfort & Co.
- Painted solid-core doors for superior sound control
- Smart Home+ technology with integrated lighting control
- One-year warranty for added peace of mind
- Personalize your home in our Design Studio



ENERGY EXPERT CERTIFIED

Every Veridian home is tested by a third-party to certify it meets the high standards of the Quality 360® program.