



# The Collette

2 Beds | 2 Baths | 1,206 Sq Ft\*



CALIFORNIA BUNGALOW



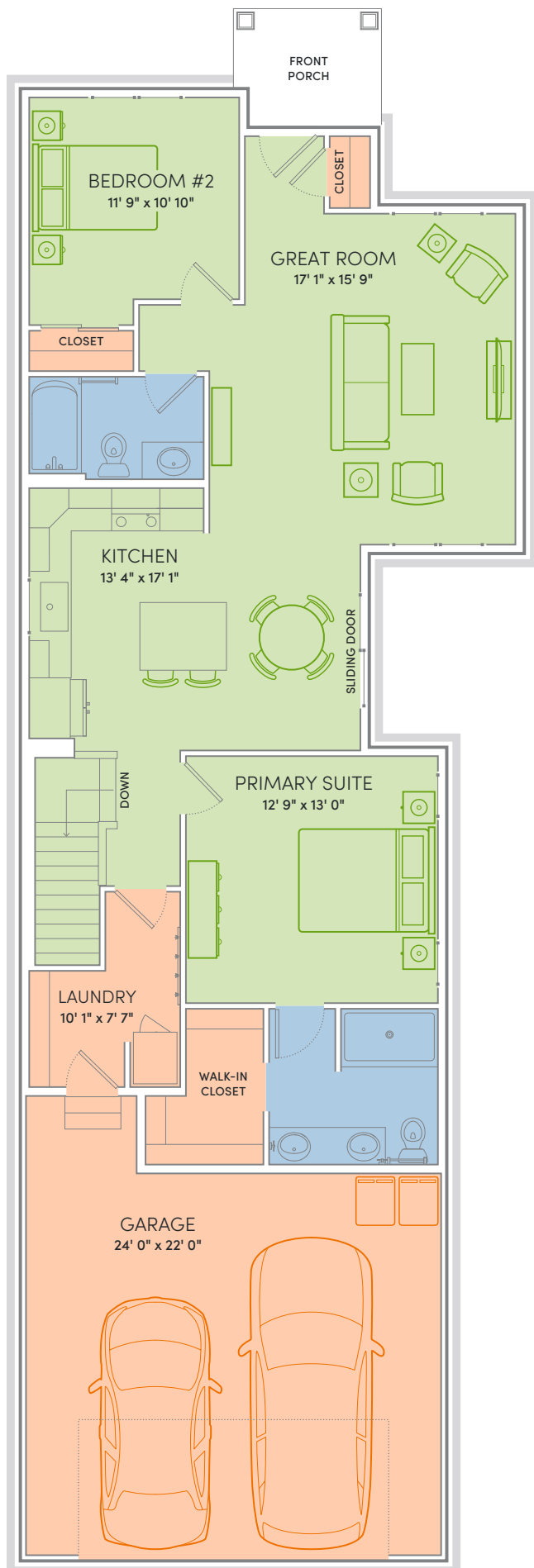
COTTAGE



SOUTHERN TRADITIONAL

**PICK A ROOM. ANY ROOM.** And you'll see more than enough to appreciate The Collette. Everything about it is open. The foyer opens to the living room which opens into the dining room which opens into the kitchen. Yet, not an inch of space is wasted. It's time to open your heart and make The Collette your home.

\*Exterior design, square footage and product selections may vary by elevation and neighborhood. Image is an artistic rendering of the home; colors and features may vary.



## THE COLLETTE HOME PLAN

### Floor Plan Features



- Locally made, custom Auburn Ridge® cabinetry, doors, and trim crafted to last
- Quality finishes from trusted brands like Kohler®, Moen®, and Shaw®
- Stylish kitchen with island and quartz countertops
- Durable luxury vinyl plank flooring in main living areas
- Designer lighting collections curated from Kichler® and Visual Comfort & Co.
- Painted solid-core doors for superior sound control
- Smart Home+ technology with integrated lighting control and built-in USB connectivity
- One-year warranty for added peace of mind
- Personalize your home with thousands of Design Studio options



**ENERGY EXPERT CERTIFIED**  
Third-party tested to certify each home meets the high standards of the Quality 360® program.

\*Actual floor plans and elevations may differ from those shown based on modifications, options and improvements to the plans by the builder. The information, text and graphics provided herein are provided by Veridian Homes as a convenience to its customers. Veridian Homes does not warrant the accuracy or completeness of the information, text, graphics and other items contained on this collateral or any other collateral. All prices, promotions and specifications are subject to change at any time without notice based on the discretion of Veridian Homes. © 2025 Veridian Homes, LLC. VH9016 12/25