



# The Kennedy

3 Beds | 2½ Baths | 1,844 Sq Ft\*



PRAIRIE



CALIFORNIA BUNGALOW



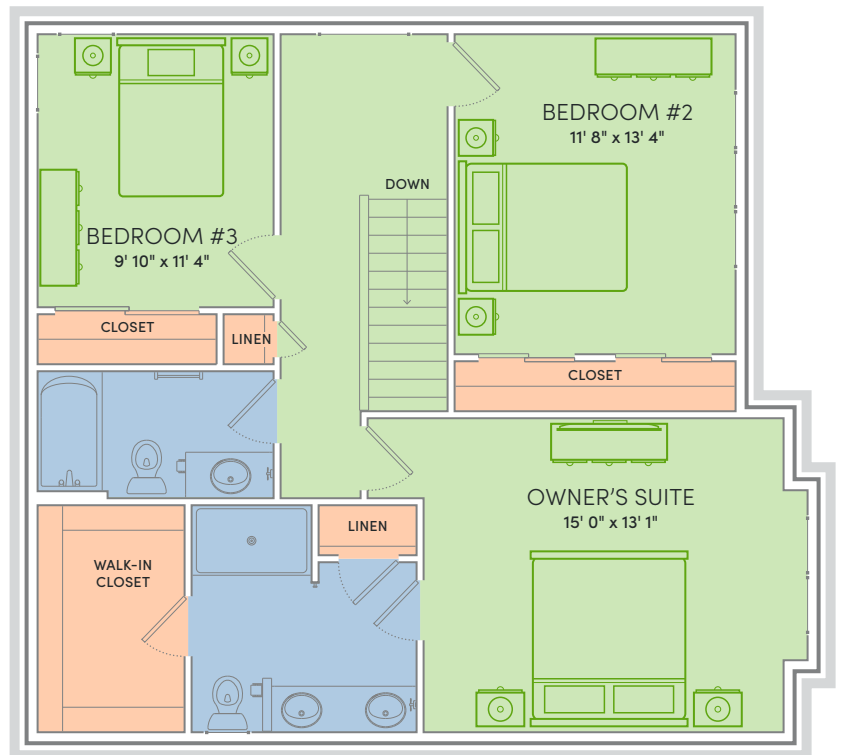
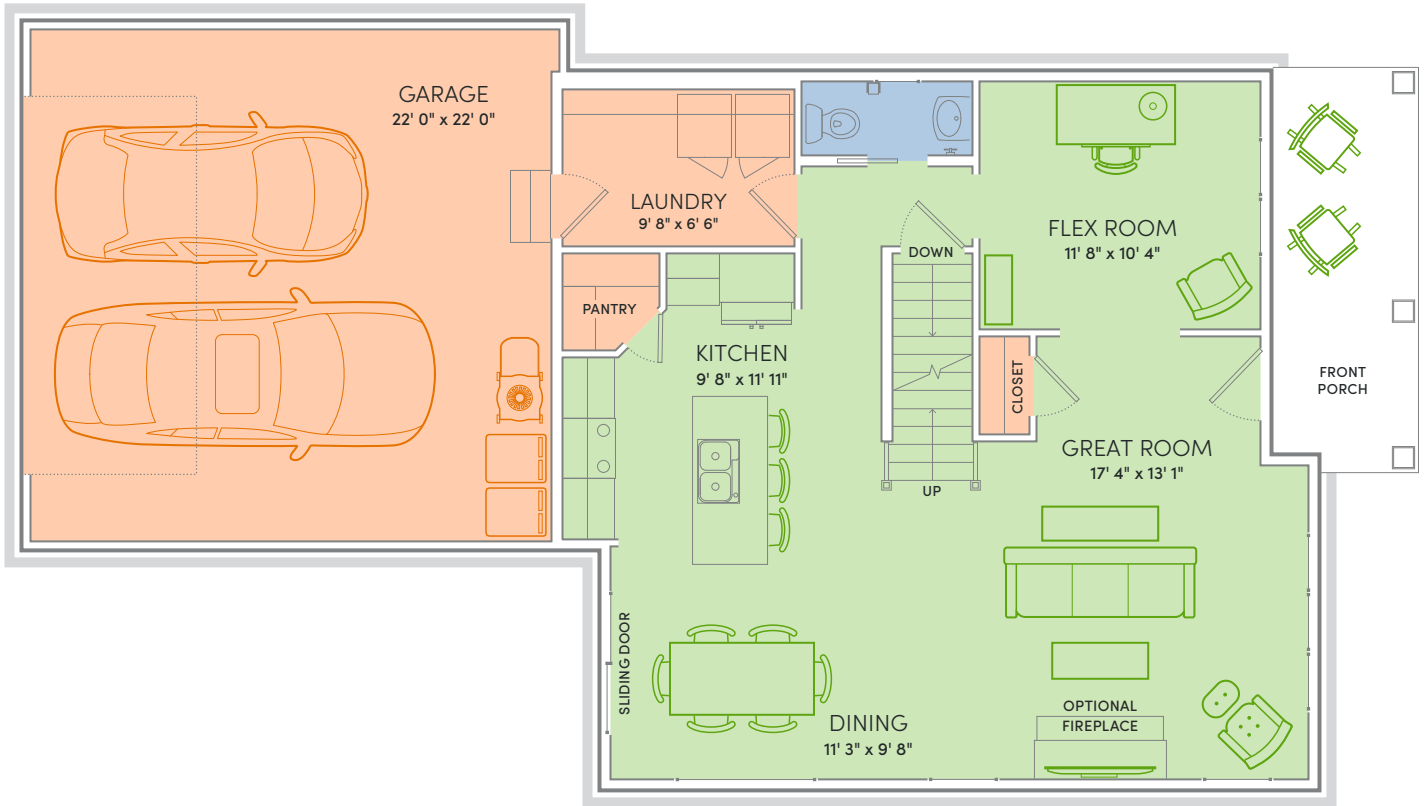
CRAFTSMAN



FARMHOUSE

\*Exterior design, square footage and product selections may vary by elevation and neighborhood.

**WE MAKE BUILDING EASY®** When you build a Veridian home, you get much more than a home designed around you and your dreams. You get the peace of mind that comes with nationally-recognized, award-winning, quality craftsmanship and energy efficiency. You get a home that's constructed using innovative building materials as well as the newest technology and building practices. The result is a high-performing, green and energy efficient home that's a healthier home for you and your pocketbook. And when you build with Veridian Homes, you build with a team of specifically trained experts who make homebuilding easy.





**YOUR FIRST APARTMENT HAD... CHARACTER.** This owner's suite has... everything your first apartment didn't. First on the list is space. Second is an enormous walk-in closet. Third is your very own bathroom with a dual bowl vanity and linen closet. Fourth is lots of light (it's a corner bedroom with lots of windows). And we haven't even told you about the rest of the house. Let's just say that your first apartment was your first for a reason.

## Floor Plan Features

- Large, open living area
- Flex room for home office, child's playroom, etc.
- Large kitchen island
- Quartz or granite kitchen counters
- Pantry cabinet in kitchen
- Owner's suite with walk-in closet and private bathroom with double bowl vanity
- Full basement
- Spacious front porch
- First floor laundry
- Custom Auburn Ridge® cabinetry
- Smart Home+ technology
- Energy expert certified
- Award-winning high-performance home



## Optional Features

- Custom built-ins
- Deck and patio spaces
- Finished lower level
- Fireplace
- Personalized closet systems
- Solid surface countertops in baths
- Tile shower
- Personalize your home with thousands of options found within our Design Studio

For Signature Series home plans, please talk with your New Home Specialist to learn more about plan-specific details.



A LOOK INSIDE THE KENNEDY'S ENERGY EFFICIENCY



- Energy Expert Certified
- Insulated Entry Door
- Pella® Low-E Insulated Windows
- Insulated Garage Door
- Electronic Set-Back Thermostats
- Energy Efficient Led Lighting
- Moen® Low Flow Fixtures
- Energy Star® Bath Fans
- Energy Efficient Air Conditioner, Furnace and Water Heater
- Radon Mitigation System
- 2x6 Framed Walls, 24 on Center
- Tyvek® House Wrap
- Advanced Air Sealing
- Spray Foam Insulation
- Weather Max® Adhesive Membrane

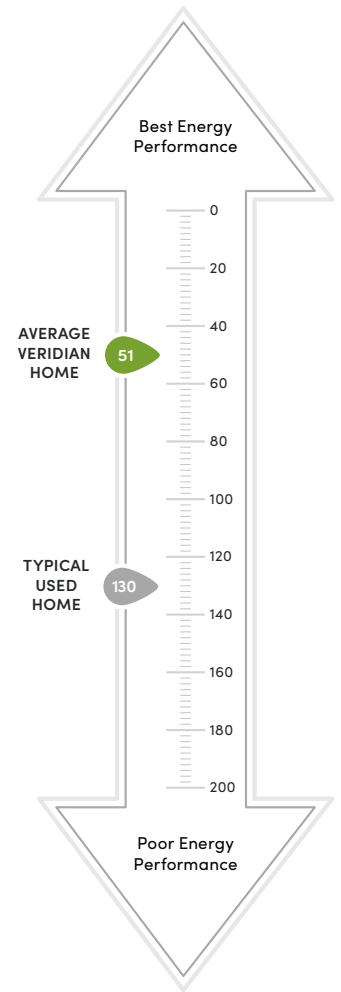


This Home is Quality 360® Certified

Every high-performance, Veridian home is tested by a third-party company, Perfect Environmental Performance (PEP). This testing allows us to individually certify each and every home we build meets the high standards of the Quality 360 program.

The Quality 360 program requires that all homes meet the highest standards in energy-efficiency, combustion safety, comfort and durability. This means that your dream home will not only look like a dream, but it will run like one too.

- ★ Exceeding Expectations
- 💡 Better Energy Performance
- 🔑 Heating/Cooling Loss Protection
- ➡ Peace of Mind



**\$310 in savings every month!\***

LOWER INDEX = HIGHER EFFICIENCY.

A HERS Index is the industry standard by which a home's energy efficiency is measured. A Veridian home receives a rating 56 HERS or better, averaging 51 HERS, compared a typical used home, which rates at 130 HERS – that's greater than a 70% increase in total energy performance. This means that your dream home will not only look like a dream, but it will run like one too.

\*Estimated average monthly energy bill savings with the Kennedy. The costs were calculated using REM/Rate™ 12.97 and the HERS Score for the reference homes listed in the arrow chart and were published by RESNET, as compared to the typical used home. The typical used and new home scores were determined by the U.S. Department of Energy.