



The Burke

3 Beds | 2½ Baths | 1,577 Sq Ft*



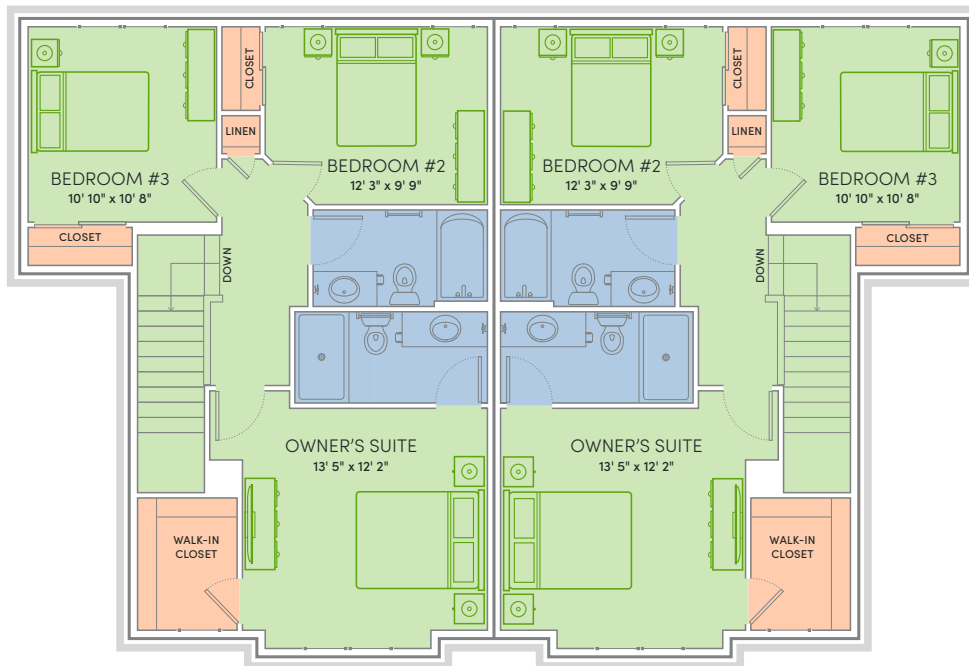
FARMHOUSE



COTTAGE

WE MAKE BUILDING EASY[®] When you build a Veridian home, you get much more than a home designed around you and your dreams. You get the peace of mind that comes with nationally-recognized, award-winning, quality craftsmanship and energy efficiency. You get a home that's constructed using innovative building materials as well as the newest technology and building practices. The result is a high-performing, green and energy efficient home that's a healthier home for you and your pocketbook. And when you build with Veridian Homes, you build with a team of specifically trained experts who make homebuilding easy.

*Exterior design, square footage and product selections may vary by elevation and neighborhood.

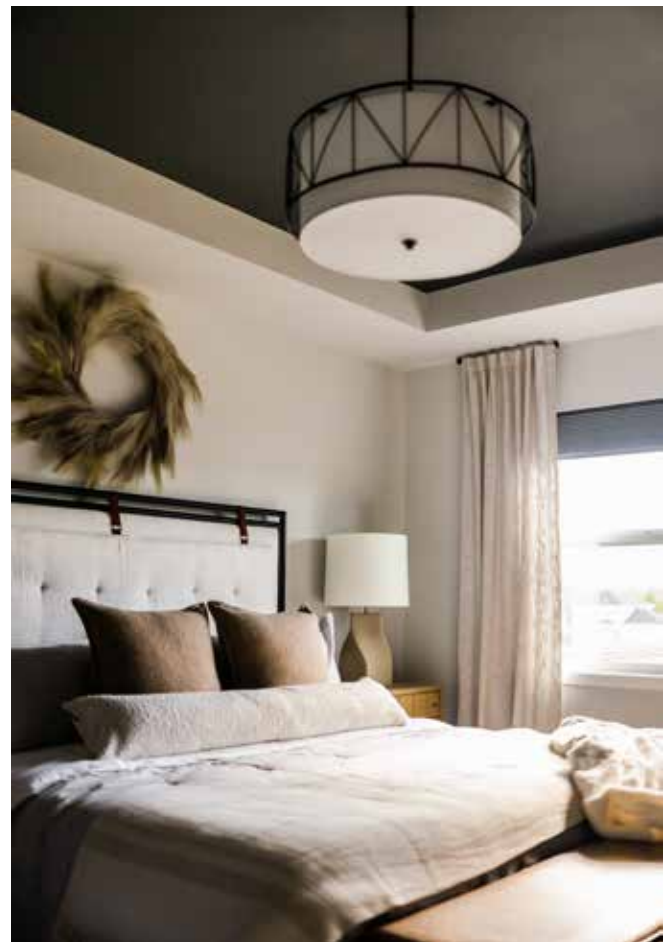




MEET THE BURKE, A HOME DESIGNED WITH ENTERTAINING IN MIND. The great room, nestled at the front of the home, acts as Grand Central Station. It greets guests as they arrive and allows plenty of space for your furry friends to pounce about. It graciously hosts members of your extended family, who just happened to pay you a surprise visit. But perhaps the best thing about this home is that it's all yours to nestle in, put your feet up and relax. Welcome to The Burke.

Floor Plan Features

- Open concept twin home
- Owner's suite with private bathroom
- First floor laundry/mudroom
- Convenient kitchen pantry
- Quartz or granite kitchen counters
- Spacious two car garage with added storage space
- Full basement
- Sliding door access to yard
- Custom Auburn Ridge® cabinetry
- Smart Home+ technology
- Energy expert certified
- Award-winning, high-performance home



*Features from a similar model



- Energy Expert Certified
- Insulated Entry Door
- Pella® Low-E Insulated Windows
- Insulated Garage Door
- Electronic Set-Back Thermostats
- Energy Efficient Led Lighting
- Moen® Low Flow Fixtures
- Energy Star® Bath Fans
- Energy Efficient Air Conditioner, Furnace and Water Heater
- Radon Mitigation System
- 2x6 Framed Walls, 24 on Center
- Tyvek® House Wrap
- Advanced Air Sealing
- Spray Foam Insulation
- Weather Max® Adhesive Membrane

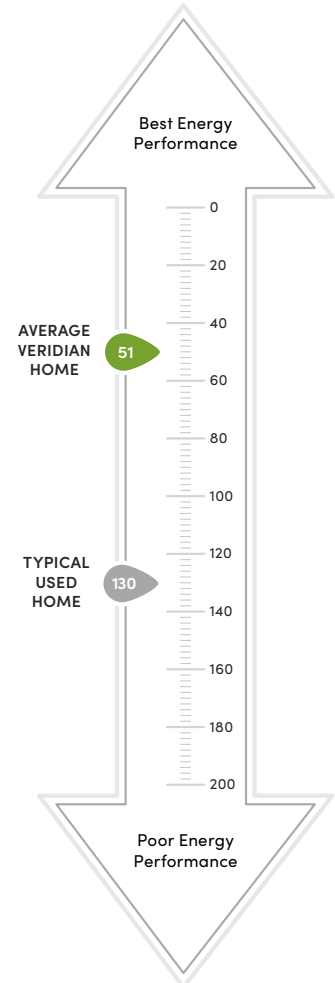


This Home is Quality 360® Certified

Every high-performance, Veridian home is tested by a third-party company, Perfect Environmental Performance (PEP). This testing allows us to individually certify each and every home we build meets the high standards of the Quality 360 program.

The Quality 360 program requires that all homes meet the highest standards in energy-efficiency, combustion safety, comfort and durability. This means that your dream home will not only look like a dream, but it will run like one too.

- Exceeding Expectations
- Better Energy Performance
- Heating/Cooling Loss Protection
- Peace of Mind



\$310 in savings every month!*

LOWER INDEX = HIGHER EFFICIENCY.

A HERS Index is the industry standard by which a home's energy efficiency is measured. A Veridian home receives a rating 56 HERS or better, averaging 51 HERS, compared a typical used home, which rates at 130 HERS – that's greater than a 70% increase in total energy performance. This means that your dream home will not only look like a dream, but it will run like one too.

*Estimated average monthly energy bill savings with The Burke. The costs were calculated using REM/Rate™ 12.97 and the HERS Score for the reference homes listed in the arrow chart and were published by RESNET, as compared to the typical used home. The typical used and new home scores were determined by the U.S. Department of Energy.