



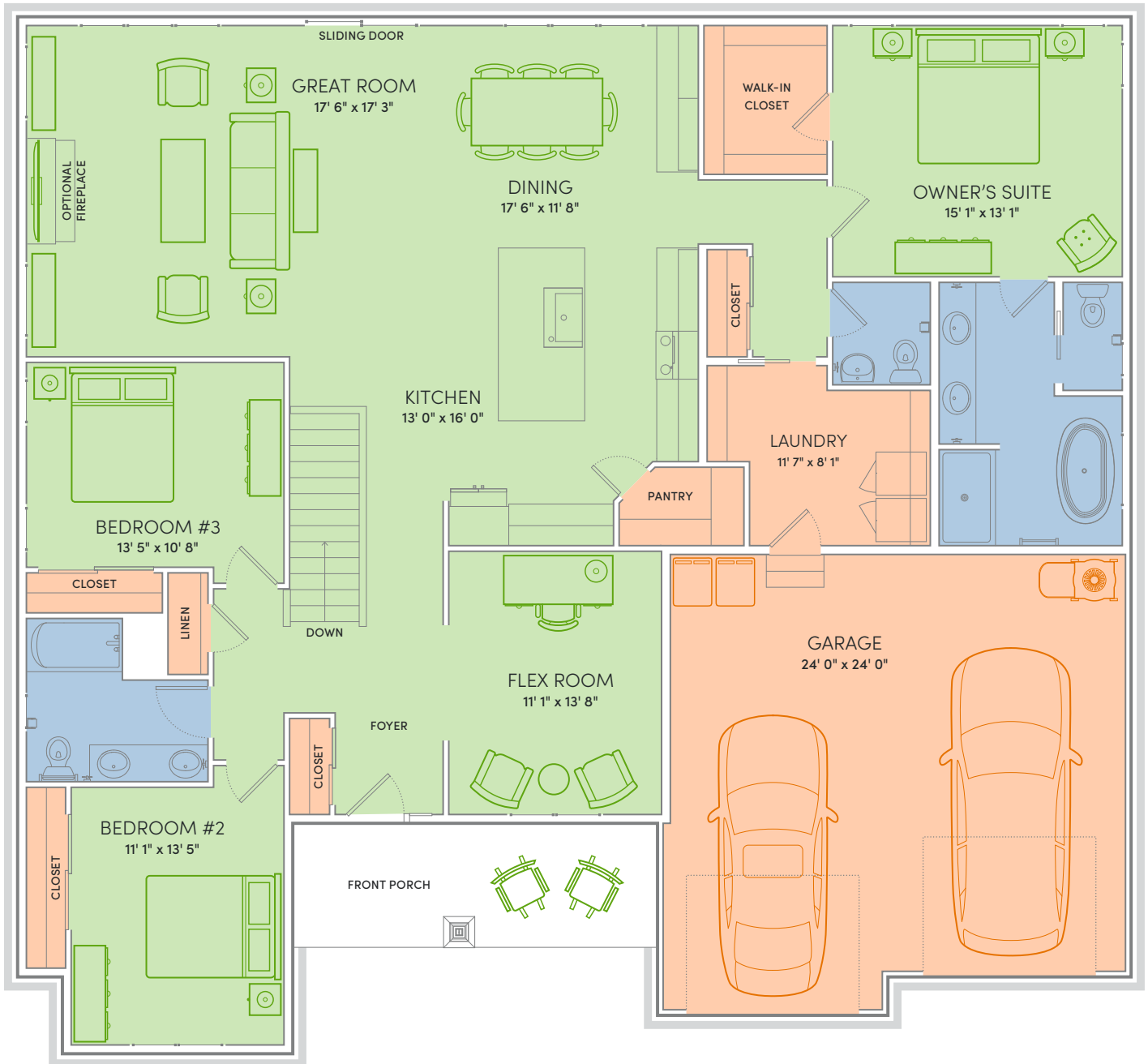
# The Lexington

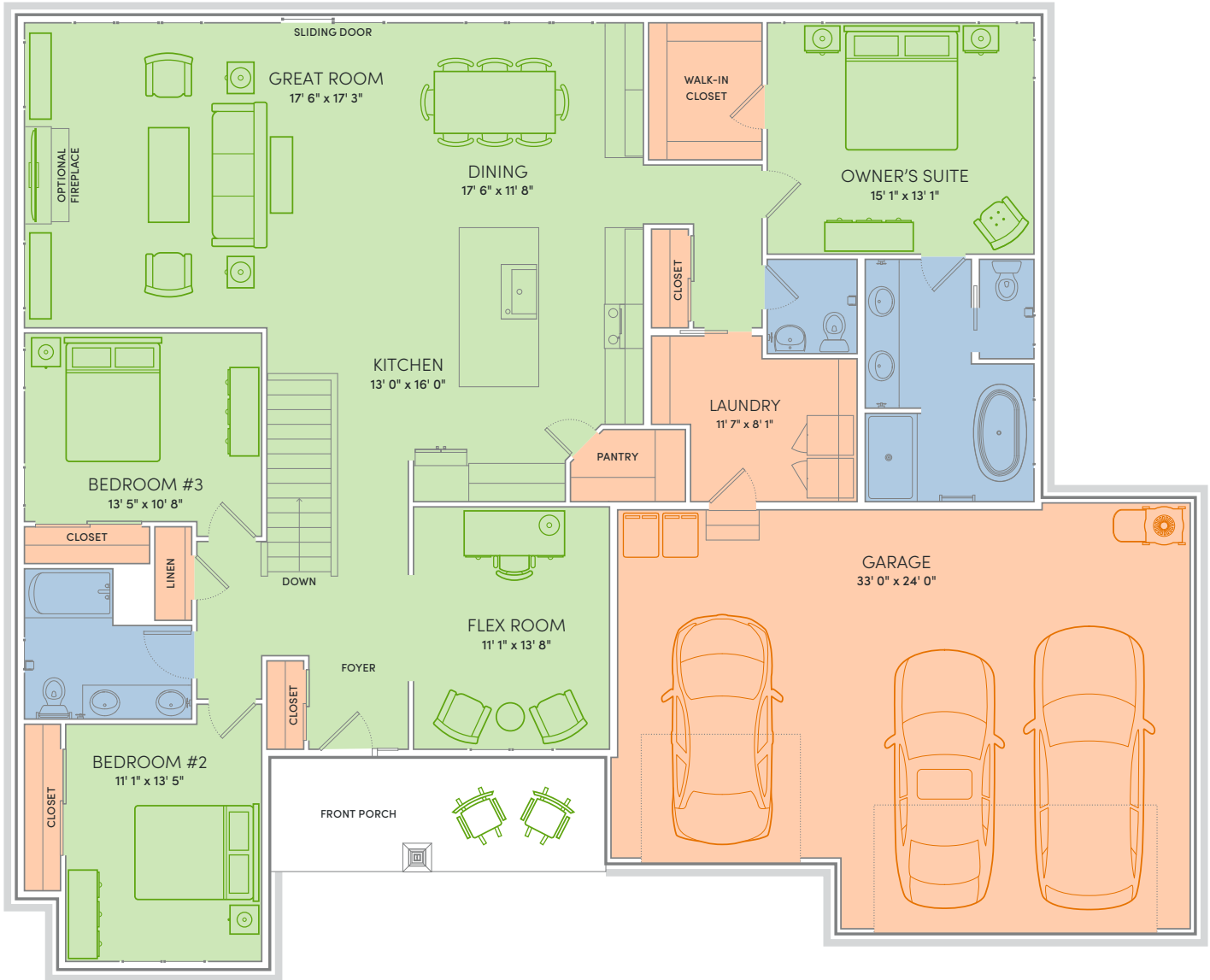
3 Beds | 2½ Baths | 2,263 Sq Ft\*

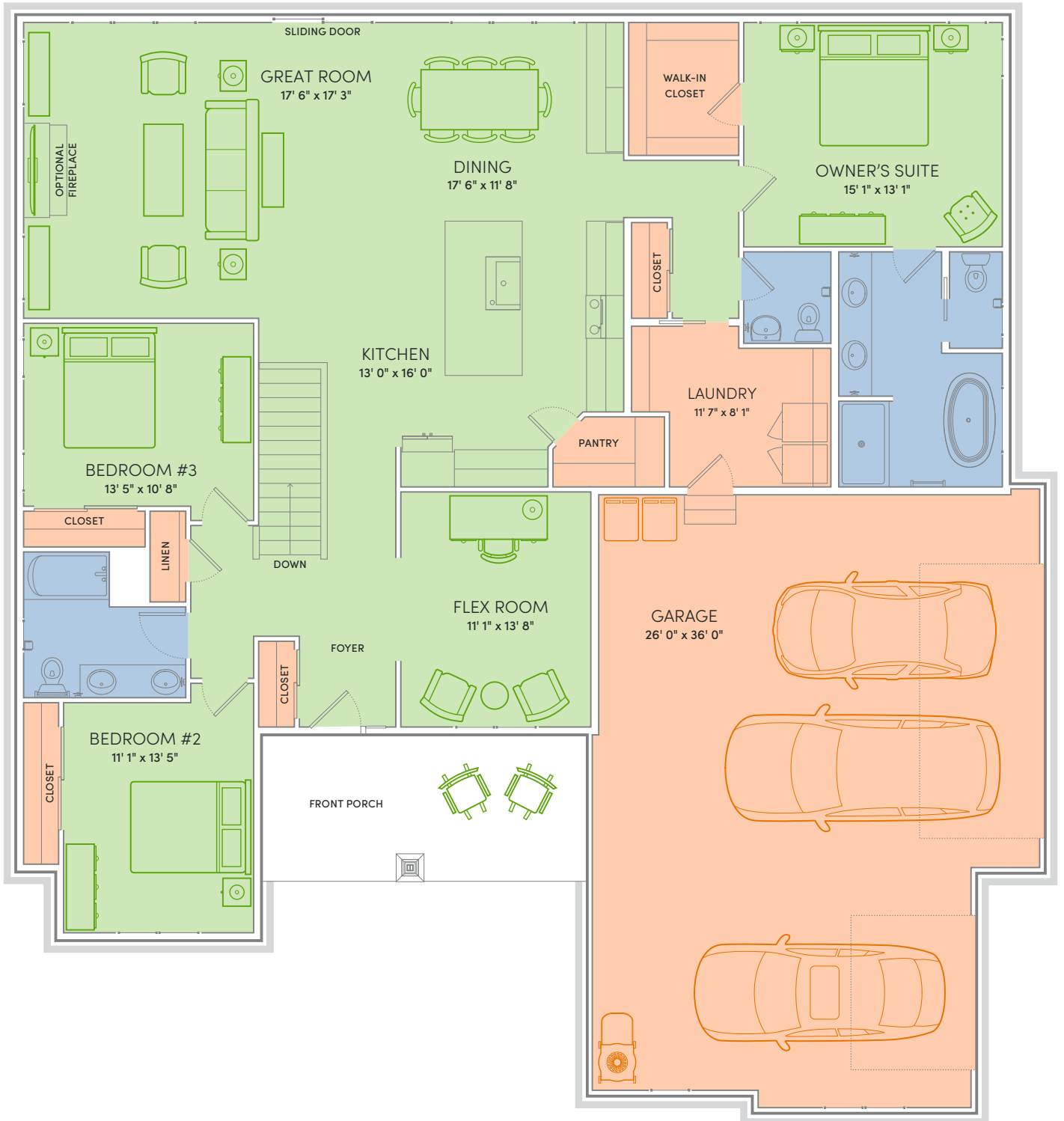


\*Exterior design, square footage and product selections may vary by elevation and neighborhood.

**WE MAKE BUILDING EASY®** When you build a Veridian home, you get much more than a home designed around you and your dreams. You get the peace of mind that comes with nationally-recognized, award-winning, quality craftsmanship and energy efficiency. You get a home that's constructed using innovative building materials as well as the newest technology and building practices. The result is a high-performing, green and energy efficient home that's a healthier home for you and your pocketbook. And when you build with Veridian Homes, you build with a team of specifically trained experts who make homebuilding easy.









**LET THE SUN SHINE IN.** That's right, push open the drapes and soak up all the gorgeous sunshine that The Lexington has to offer. Sip on freshly squeezed orange juice at the kitchen island, and then treat yourself to a hot soak in the tub with a warm cup of joe. Guests will be delighted when they are awakened by the smell of your award-winning waffle batter sizzling in your Belgian waffle maker. At least it would be award-winning if you ever decided to enter it in a contest, but that's irrelevant. Welcome to the Lexington, where hospitality comes easy.

## Floor Plan Features

- Nine foot ceilings throughout first floor
- Kitchen open to great room/dining area
- Quartz or granite kitchen counters
- Custom Auburn Ridge® cabinetry
- Full basement
- Owner's suite features large walk-in closet and private bath with shower and soaking tub
- Flex room off foyer, for formal dining, office, etc.
- Smart Home+ technology
- Energy expert certified
- Award-winning, high-performance home

## Optional Features

- Custom built-ins
- Deck and patio spaces
- Finished lower level
- Fireplace
- Personalized closet systems
- Solid surface countertops in baths
- Tile shower
- Personalize your home with thousands of options found within our Design Studio

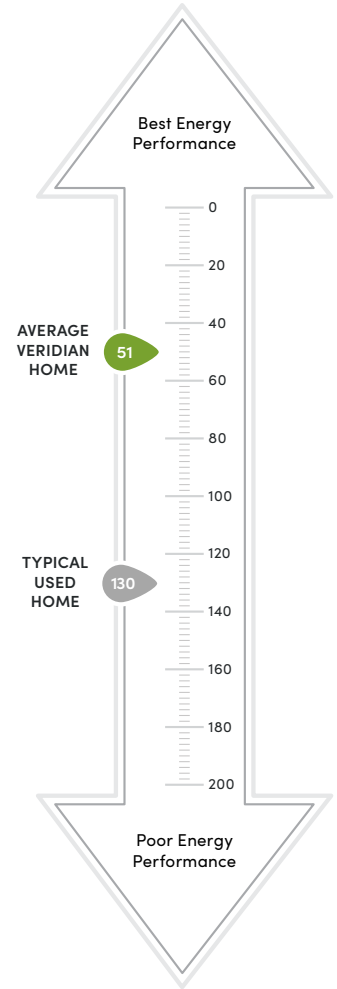
## Three-Car Configurations



For Signature Series home plans, please talk with your New Home Specialist to learn more about plan-specific details.



- Energy Expert Certified
- Insulated Entry Door
- Pella® Low-E Insulated Windows
- Insulated Garage Door
- Electronic Set-Back Thermostats
- Energy Efficient Led Lighting
- Moen® Low Flow Fixtures
- Energy Star® Bath Fans
- Energy Efficient Air Conditioner, Furnace and Water Heater
- Radon Mitigation System
- 2x6 Framed Walls, 24 on Center
- Tyvek® House Wrap
- Advanced Air Sealing
- Spray Foam Insulation
- Weather Max® Adhesive Membrane



### This Home is Quality 360® Certified

Every high-performance, Veridian home is tested by a third-party company, Perfect Environmental Performance (PEP). This testing allows us to individually certify each and every home we build meets the high standards of the Quality 360 program.

The Quality 360 program requires that all homes meet the highest standards in energy-efficiency, combustion safety, comfort and durability. This means that your dream home will not only look like a dream, but it will run like one too.

- Exceeding Expectations
- Better Energy Performance
- Heating/Cooling Loss Protection
- Peace of Mind

### \$310 in savings every month!\*

LOWER INDEX = HIGHER EFFICIENCY.

A HERS Index is the industry standard by which a home's energy efficiency is measured. A Veridian home receives a rating 56 HERS or better, averaging 51 HERS, compared a typical used home, which rates at 130 HERS – that's greater than a 70% increase in total energy performance. This means that your dream home will not only look like a dream, but it will run like one too.

\*Estimated average monthly energy bill savings with The Lexington. The costs were calculated using REM/Rate™ 12.97 and the HERS Score for the reference homes listed in the arrow chart and were published by RESNET, as compared to the typical used home. The typical used and new home scores were determined by the U.S. Department of Energy.

