



# The Bryant II | 2 – CAR GARAGE

4 Beds | 2½ Baths | 2,876 Sq Ft\*



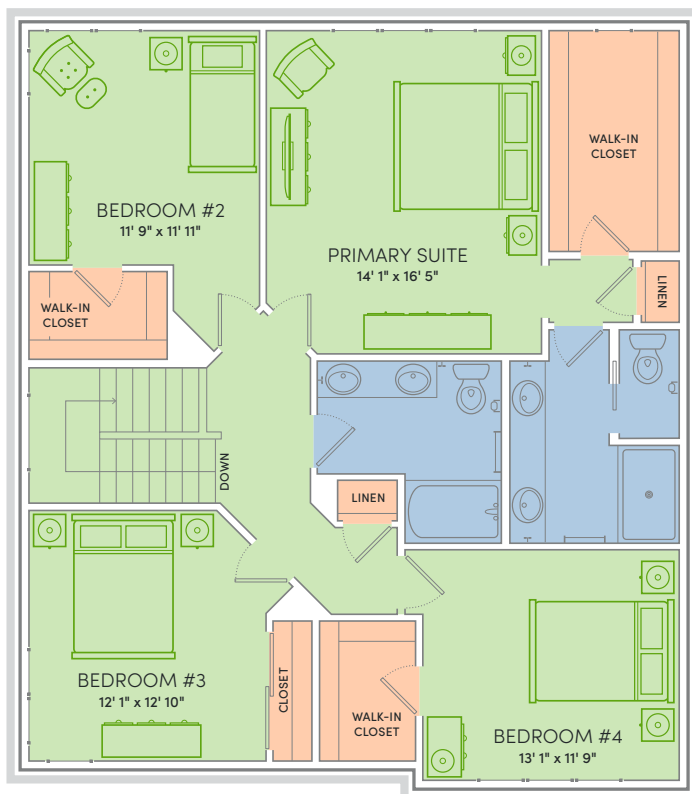
CRAFTSMAN



COTTAGE

**THE BRYANT II IS WHERE ELEGANCE MEETS EFFORTLESS LIVING.** Beyond its stunning first impression, this home offers four beautifully appointed bedrooms, two and a half baths, and dual flex spaces that adapt to your lifestyle. Three walk-in closets and an available 3-car garage option add both convenience and prestige. Every detail has been thoughtfully curated to elevate daily living. Welcome to The Bryant II—where luxury feels like home.

\*Exterior design, square footage and product selections may vary by elevation and neighborhood. Image is an artistic rendering of the home; colors and features may vary.



## Floor Plan Features



- Locally made, custom Auburn Ridge® cabinetry, doors, and trim crafted to last
- Quality finishes from trusted brands like Kohler®, Moen®, and Shaw®
- Stylish kitchen with island and quartz countertops
- Durable luxury vinyl plank flooring in main living areas
- Designer lighting collections curated from Kichler® and Visual Comfort & Co.
- Painted solid-core doors for sound control
- Smart Home+ technology with integrated lighting control and built-in USB connectivity
- One-year warranty for added peace of mind
- Personalize your home with thousands of Design Studio options



ENERGY EXPERT CERTIFIED  
Third-party tested to certify each home meets the high standards of the Quality 360® program.



# The Bryant II | 3 – CAR GARAGE

4 Beds | 2½ Baths | 2,876 Sq Ft\*



CRAFTSMAN



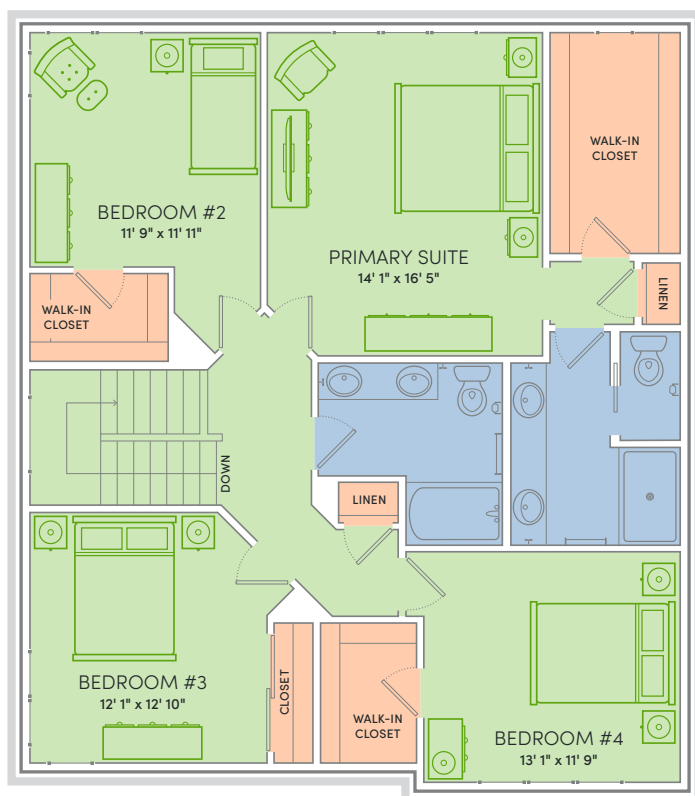
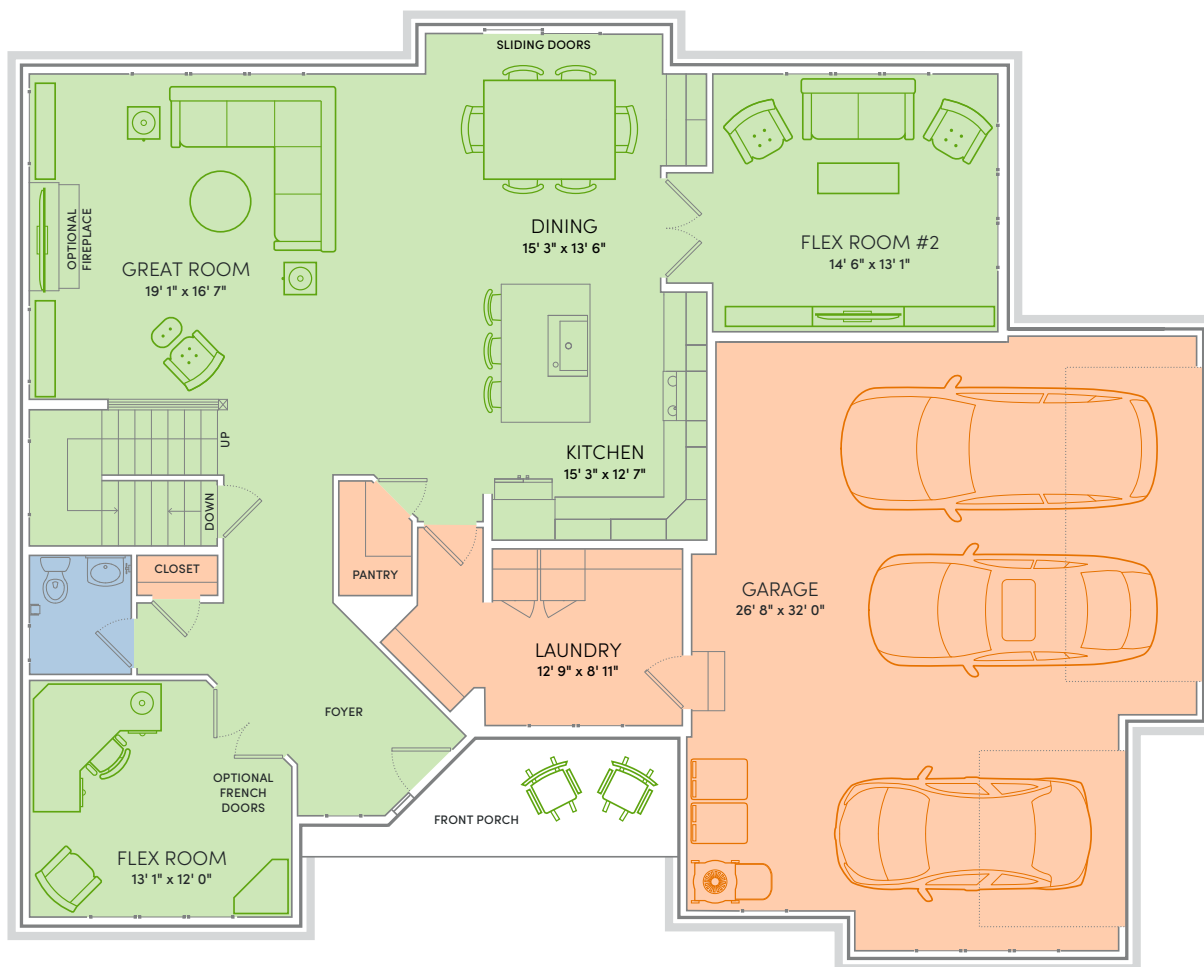
COTTAGE



**THE BRYANT II IS WHERE ELEGANCE MEETS EFFORTLESS LIVING.** Beyond its stunning first impression, this home offers four beautifully appointed bedrooms, two and a half baths, and dual flex spaces that adapt to your lifestyle. Three walk-in closets and an available 3-car garage option add both convenience and prestige. Every detail has been thoughtfully curated to elevate daily living. Welcome to The Bryant II—where luxury feels like home.

\*Exterior design, square footage and product selections may vary by elevation and neighborhood. Image is an artistic rendering of the home; colors and features may vary.





## Floor Plan Features



- Locally made, custom Auburn Ridge® cabinetry, doors, and trim crafted to last
- Quality finishes from trusted brands like Kohler®, Moen®, and Shaw®
- Kitchen with island and quartz countertops
- Durable luxury vinyl plank flooring
- Designer lighting collections curated from Kichler® and Visual Comfort & Co.
- Painted solid-core doors for sound control
- Smart Home+ technology with integrated lighting control and built-in USB connectivity
- One-year warranty for added peace of mind
- Personalize your home with thousands of Design Studio options



**ENERGY EXPERT CERTIFIED**  
Third-party tested to certify each home meets the high standards of the Quality 360® program.