



# The Bryant I

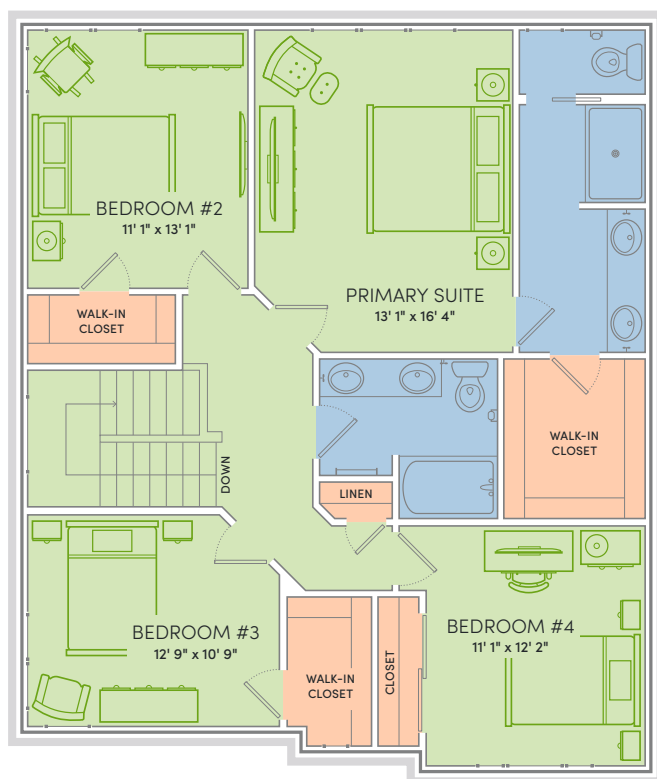
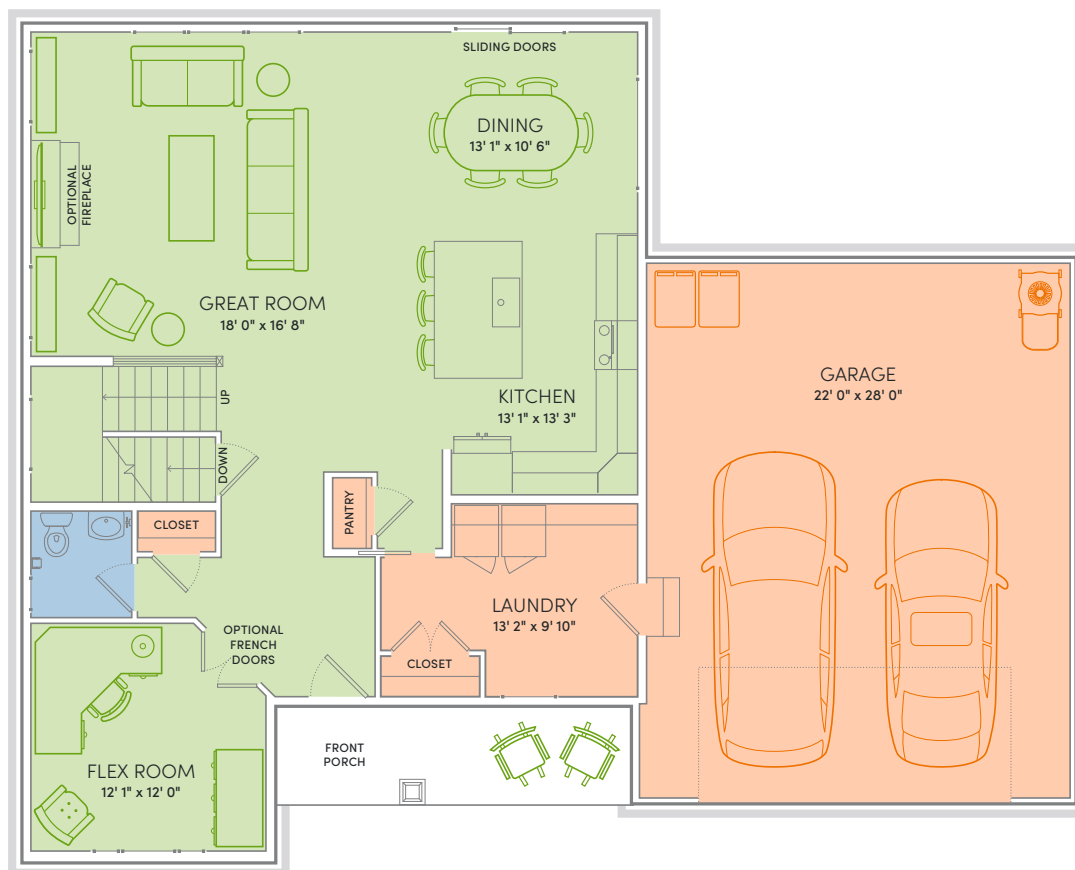
4 Beds | 2½ Baths | 2,406 Sq Ft\*



THE BRYANT I IS MORE THAN JUST A PRETTY FACE, THIS IS ONE HARDWORKING HOME.

Four spacious bedrooms, two and a half bathrooms, a flex room, plus three walk-in closets... We could go on and on forever boasting about all of the great features The Bryant I has to offer. But it's probably best if you just check them out for yourself. Welcome to The Bryant I.

\*Exterior design, square footage and product selections may vary by elevation and neighborhood. Image is an artistic rendering of the home; colors and features may vary.



## Floor Plan Features



- Locally made, custom Auburn Ridge® cabinetry, doors, and trim crafted to last
- Quality finishes from trusted brands like Kohler®, Moen®, and Shaw®
- Stylish kitchen with island and quartz countertops
- Durable luxury vinyl plank flooring in main living areas
- Designer lighting collections curated from Kichler® and Visual Comfort & Co.
- Painted solid-core doors for sound control
- Smart Home+ technology with integrated lighting control and built-in USB connectivity
- One-year warranty for added peace of mind
- Personalize your home with thousands of Design Studio options



### ENERGY EXPERT CERTIFIED

Third-party tested to certify each home meets the high standards of the Quality 360® program.