

# THE OLIVE



5 BEDROOMS · 4.5 BATHROOMS · 5,585 SQUARE FEET\*



COTTAGE

\*Includes 1,524 Sq Ft of Finished Lower Level

**WE'RE THRILLED TO INTRODUCE YOU TO THE OLIVE.** The home plan that was selected for the debut of The Generous Home program. Sure, it has all the bells and whistles you'd expect from a Parade of Homes home, like a take-your-breath-away, two-story great room, a robust butler's pantry, a cozy fireplace in the owner's suite, custom Auburn Ridge cabinetry and more. And not to mention it is also certified energy efficient as all Veridian homes are. But what's really unique, and utterly awesome, is that this specific home is truly a generous home. All proceeds from its sale will go directly to local charities that support the most vulnerable.

PARADE  
OF HOMES

807 Walter Run, Waunakee, WI 53597 (Homesite #62, Westbridge) | [VeridianHomes.com](http://VeridianHomes.com)

**ABOUT THE GENEROUS HOME PROGRAM.** Veridian Homes has a longstanding history of giving back to our communities in which we build within. In fact, in 2004, the Veridian Homes Foundation was born, our non-profit entity that today has contributed well over \$1 million to Southern Wisconsin charitable organizations. It made sense to us that if we're going to build a show-stopping Parade home, why not use that as a vehicle to provide ample funding to local non-profits? The proceeds from the sale of this home will benefit local charities that are focused on supporting children and families in need, the homeless and the hungry.

This has been no easy feat, and we wouldn't have been able to do this without assistance from our trade partners, who have donated their time, labor and materials. A complete list of our participating trades can be found at [www.TheGenerousHome.com](http://www.TheGenerousHome.com). We're so proud to debut The Generous Home program during 2021 Madison Area Builders Association Parade of Homes.

## Features

- Spacious, open floor plan
- Double doors for a dramatic entrance
- Two-story foyer and great room
- Kitchen with large island and a secondary prep kitchen with pantry
- Fireplace with built-ins in great room, second fireplace in owner's suite
- Formal dining space open to kitchen
- First floor owner's suite
- Owner's bath with soaking tub, shower and water closet
- Walk-in closet, linen closet and laundry room accessible through owner's bathroom
- Flex room off entrance for home office, library, etc.
- Loft, open to great room below, with entertaining and office spaces
- Three bedrooms and two bathrooms upstairs
- Finished lower level with additional bedroom, bathroom, wet bar, family room and workout room
- Three car garage
- Custom Auburn Ridge® cabinetry
- Smart Home+ technology
- Energy expert certified
- Award-winning high-performance home

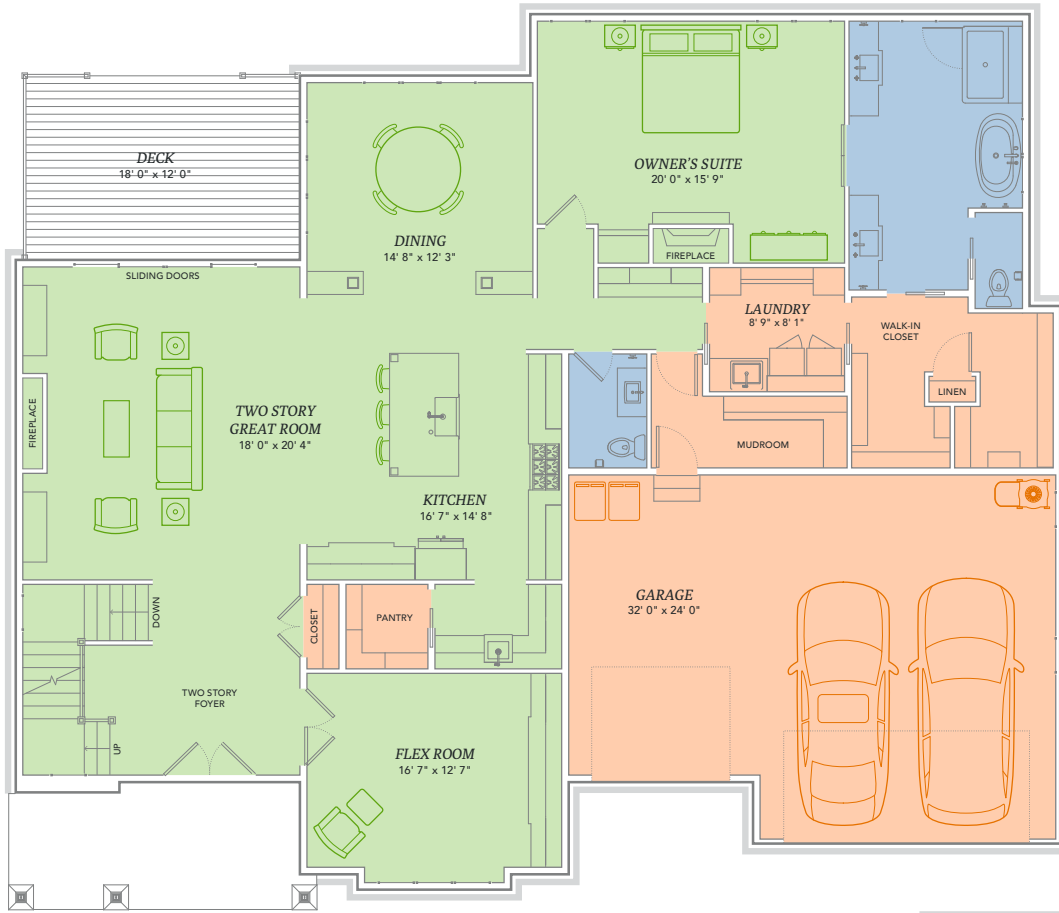
## Benefiting These Local Charities

- American Family Children's Hospital
- Badger Prairie Needs Network
- The Beacon (Catholic Charities)
- Boys and Girls Clubs of Dane County
- Cystic Fibrosis Foundation
- Domestic Abuse Intervention Services
- Habitat for Humanity
- Hope House
- Porchlight
- The River Food Pantry
- Second Harvest Foodbank
- Waunafest
- Waunakee Food Pantry
- Waunakee Neighborhood Connection
- Waunakee Chamber of Commerce

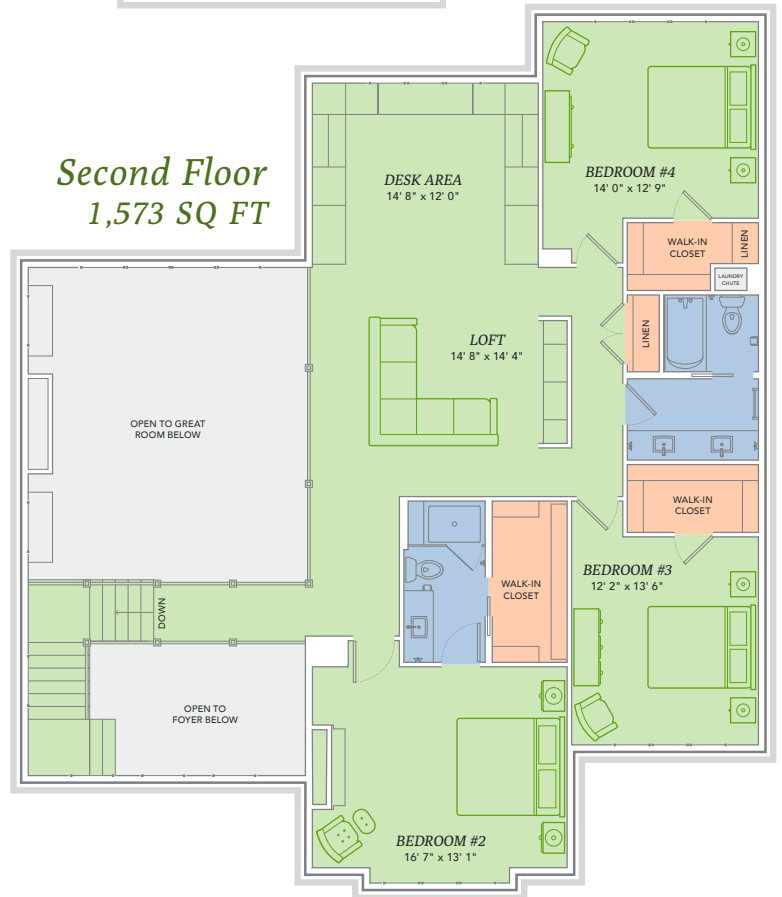
## Exterior



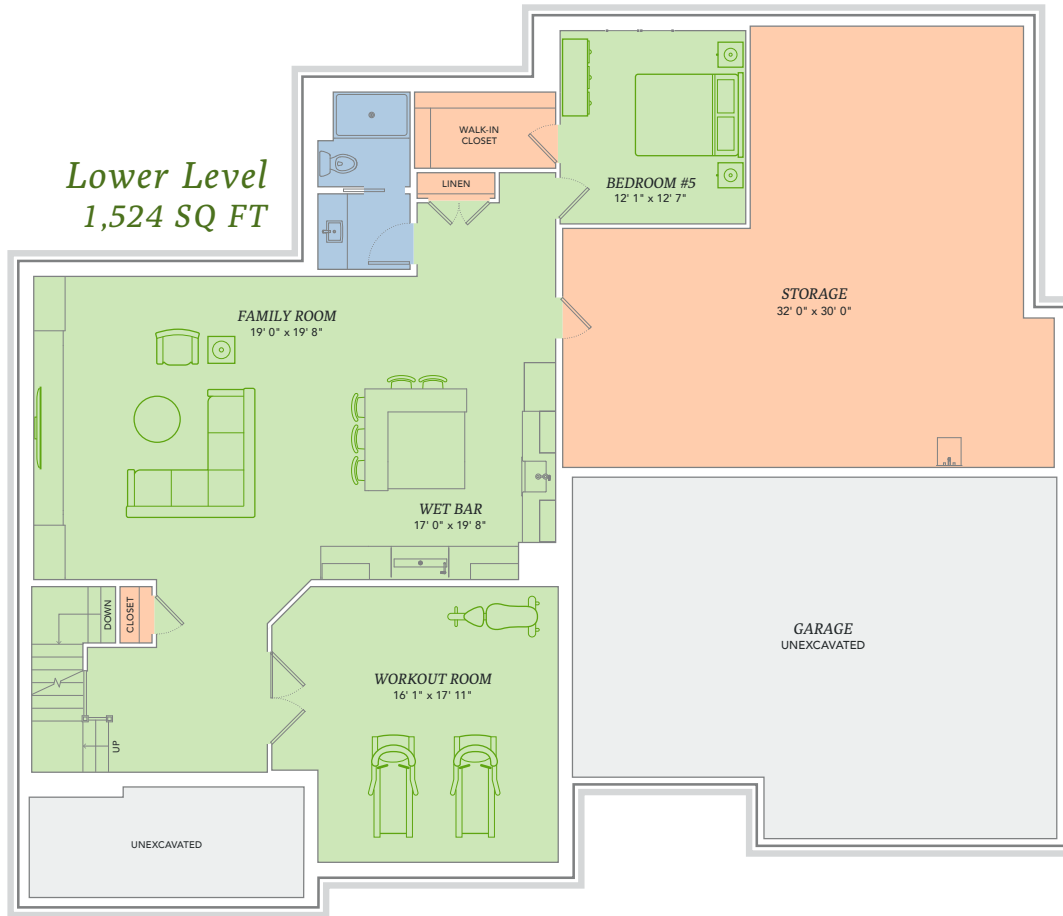
BUILDING ENERGY EFFICIENT, GREEN HOMES SINCE 2001



*First Floor*  
2,488 SQ FT



*Second Floor*  
1,573 SQ FT



*Special Thanks*  
TO OUR PARTNERS:

ABC Supply • Advanced Fastening Supply • Auburn Ridge • Automation Arts • B&B Laminates Inc. • Birrenkott Surveying • The Bruce Company • City Wide Insulation of Madison, Inc. • The Concrete Remover Inc. • Crystal Cleaners Inc. • Edge Construction Company • Electric 1 • Dave Jones, Inc. • Fireside Hearth and Home First Choice Drywall Inc. • Floor360 • Harris Builders, Inc. • Helwig Roofing, LLC Home MD • Hottmann Construction • J&L Interiors • Kichler • Lifetime Door Company • LYCON Inc. • Madison Lighting • Marshall Towne Millwork • McSherry Custom Builders, LLC • Mid Wisconsin Glass & Mirror • M. N. M. Construction, LLC • P&J Eagle Sheet Metal Inc. • Pella • Perfect Environmental Performance (PEP) • Pharo Heating and Cooling • R&D Thiel Inc. • Spahn Excavating • Temperature Systems Inc. • TS Masonry Inc. • Wausau Supply Company • Zander Solutions • Zeigler Crane Services (TSI) • Zimmerman Builders, LLC



- Energy Expert Certified
- Insulated Entry Door
- Pella® Low-E Insulated Windows
- Insulated Garage Door
- Electronic Set-Back Thermostats
- Energy Efficient LED Lighting
- Kohler® Low Flow Fixtures
- Energy Star® Bath Fans
- Energy Efficient Air Conditioner, Furnace and Water Heater
- Radon Mitigation System
- 2x6 Framed Walls, 24 on Center
- Tyvek® House Wrap
- Advanced Air Sealing
- Spray Foam Insulation
- Weather Max® Adhesive Membrane



**\$296 IN SAVINGS EVERY MONTH!\***

**A LOOK INSIDE THE OLIVE'S ENERGY EFFICIENCY.** Lower index = higher efficiency. What does that mean to you? A HERS Index is the industry standard by which a home's energy efficiency is measured. It is also the nationally-recognized system for inspecting and calculating a home's energy performance. A Veridian home receives a rating 56 HERS or better, averaging 51 HERS, compared a typical old used home, which rates at 130 HERS – that's greater than a 70% increase in total energy performance. This means that your dream home will not only look like a dream, but it will run like one too.

\*Estimated average monthly energy bill savings with the Olive. The costs were calculated using REM/Rate™ 12.97 and the HERS Score for the reference homes listed in the arrow chart and were published by RESNET, as compared to the typical used home. The typical used and new home scores were determined by the U.S. Department of Energy.

