



# The Hoffman

4 Beds | 2½ Baths | 2,045 Sq Ft\*



PRAIRIE



COTTAGE



CRAFTSMAN



CRAFTSMAN II



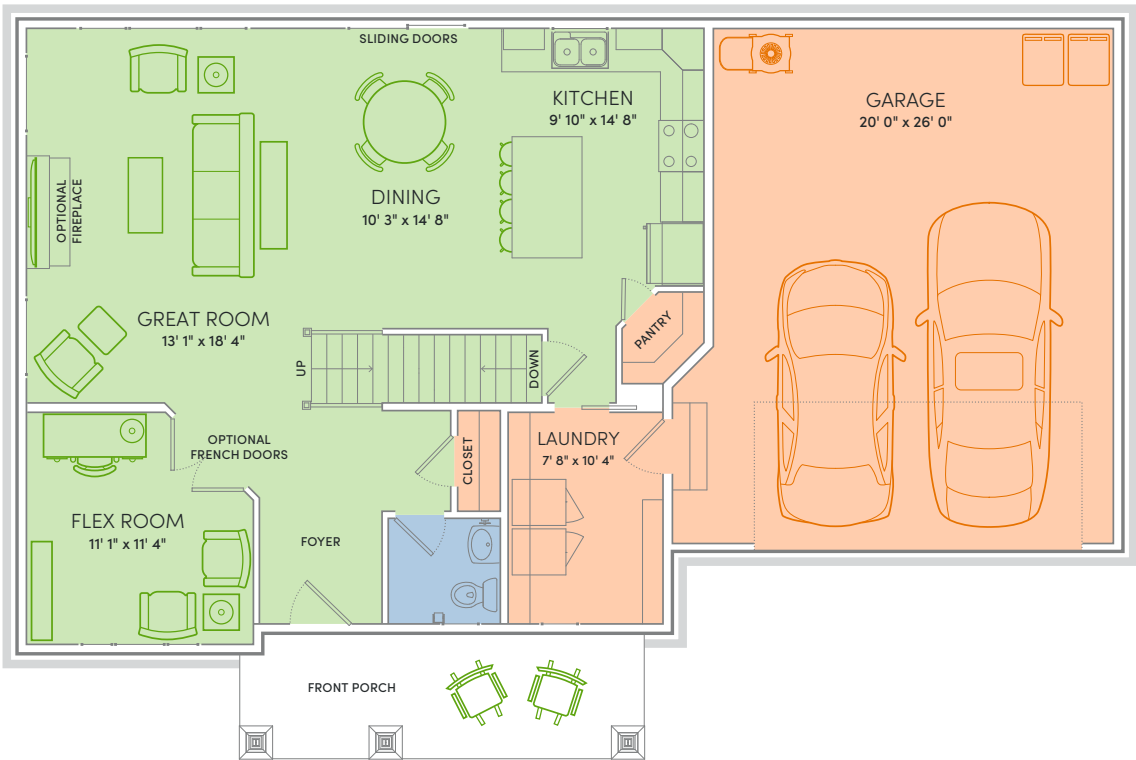
FARMHOUSE



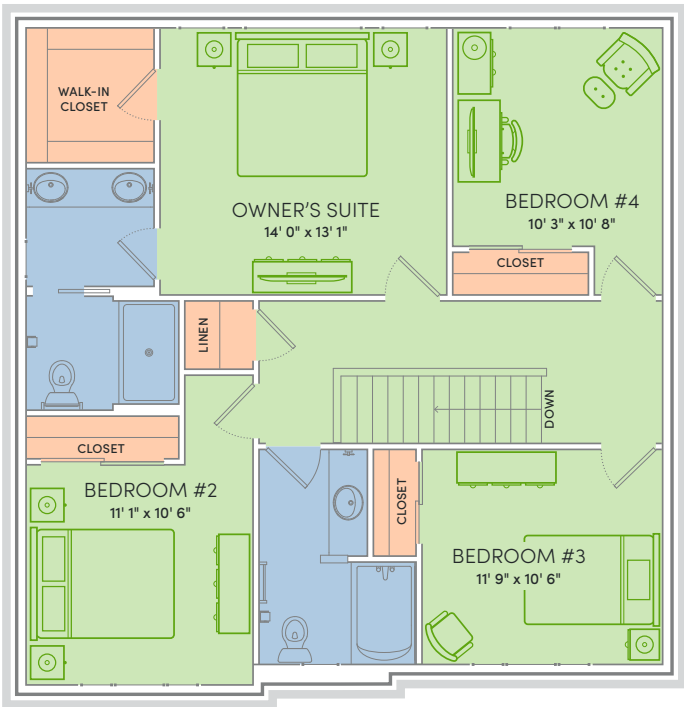
TRADITIONAL

\*Exterior design, square footage and product selections may vary by elevation and neighborhood.

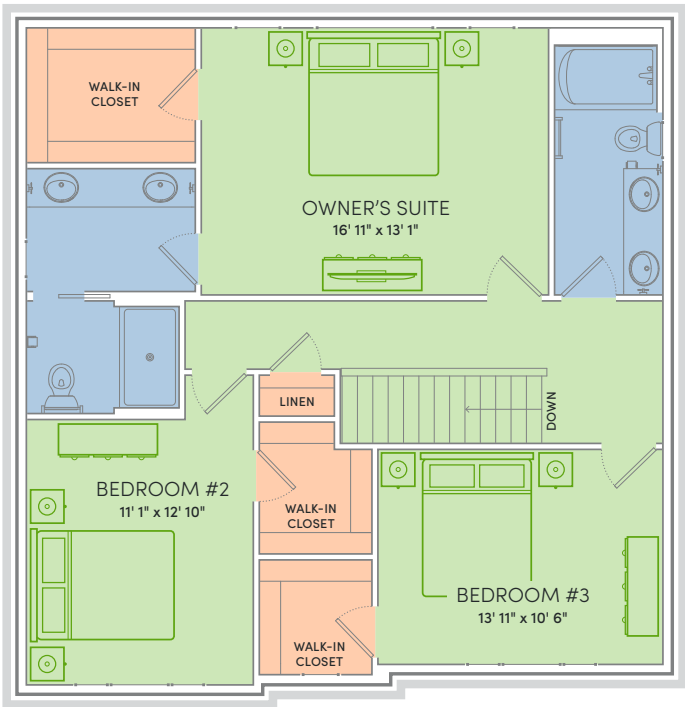
**WE MAKE BUILDING EASY.®** When you build a Veridian home, you get much more than a home designed around you and your dreams. You get the peace of mind that comes with nationally-recognized, award-winning, quality craftsmanship and energy efficiency. You get a home that's constructed using innovative building materials as well as the newest technology and building practices. The result is a high-performing, green and energy efficient home that's a healthier home for you and your pocketbook. And when you build with Veridian Homes, you build with a team of specifically trained experts who make homebuilding easy.



THE HOFFMAN - 4 BEDROOM



THE HOFFMAN - 3 BEDROOM





**CALLING ALL COOKS, BOOK LOVERS AND DECORATORS!** Go ahead, line the shelves with those classic Mark Twain novels or one-of-a-kind treasures. Load up that roomy kitchen with gourmet pans and obscure gadgets. With more space, means more luxury. Meet The Hoffman.

---

## Floor Plan Features

- Open floor plan
- Kitchen island with breakfast bar
- Quartz or granite kitchen counters
- Flex room for formal dining, office, etc.
- Spacious first floor laundry/mudroom
- Owner's suite bathroom features dual vanities and water closet
- Large walk-in closet off owner's bedroom
- Extra storage room in garage
- Custom Auburn Ridge® cabinetry
- Smart Home+ technology
- Energy expert certified
- Award-winning high-performance home

## Optional Features

- Custom built-ins
- Deck and patio spaces
- Finished lower level
- Fireplace
- Personalized closet systems
- Solid surface countertops in baths
- Tile shower
- Personalize your home with thousands of options found within our Design Studio



For Signature Series home plans, please talk with your New Home Specialist to learn more about plan-specific details.



- Energy Expert Certified
- Insulated Entry Door
- Pella® Low-E Insulated Windows
- Insulated Garage Door
- Electronic Set-Back Thermostats
- Energy Efficient Led Lighting
- Moen® Low Flow Fixtures
- Energy Star® Bath Fans
- Energy Efficient Air Conditioner, Furnace and Water Heater
- Radon Mitigation System
- 2x6 Framed Walls, 24 on Center
- Tyvek® House Wrap
- Advanced Air Sealing
- Spray Foam Insulation
- Weather Max® Adhesive Membrane

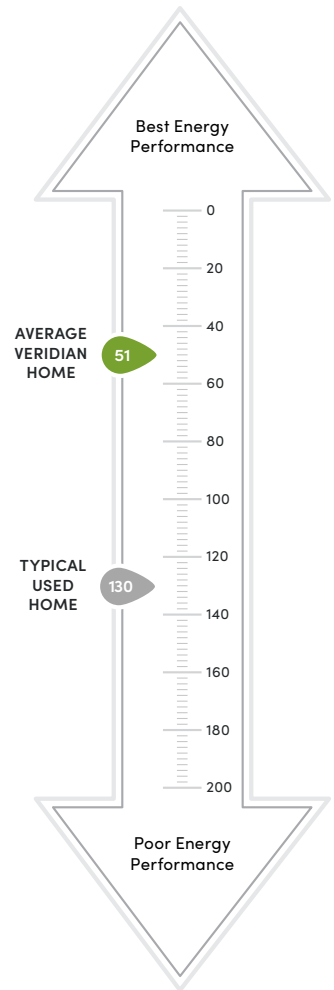


## This Home is Quality 360® Certified

Every high-performance, Veridian home is tested by a third-party company, Perfect Environmental Performance (PEP). This testing allows us to individually certify each and every home we build meets the high standards of the Quality 360 program.

The Quality 360 program requires that all homes meet the highest standards in energy-efficiency, combustion safety, comfort and durability. This means that your dream home will not only look like a dream, but it will run like one too.

- Exceeding Expectations
- Better Energy Performance
- Heating/Cooling Loss Protection
- Peace of Mind



**\$310 in savings every month!\***

LOWER INDEX = HIGHER EFFICIENCY.

A HERS Index is the industry standard by which a home's energy efficiency is measured. A Veridian home receives a rating 56 HERS or better, averaging 51 HERS, compared a typical used home, which rates at 130 HERS – that's greater than a 70% increase in total energy performance. This means that your dream home will not only look like a dream, but it will run like one too.

\*Estimated average monthly energy bill savings with the Hoffman. The costs were calculated using REM/Rate™ 12.97 and the HERS Score for the reference homes listed in the arrow chart and were published by RESNET, as compared to the typical used home. The typical used and new home scores were determined by the U.S. Department of Energy.