



The Hoffman | 4-BED PLAN

4 Beds | 2½ Baths | 2,045 Sq Ft*



PRAIRIE



COTTAGE



CRAFTSMAN



FARMHOUSE

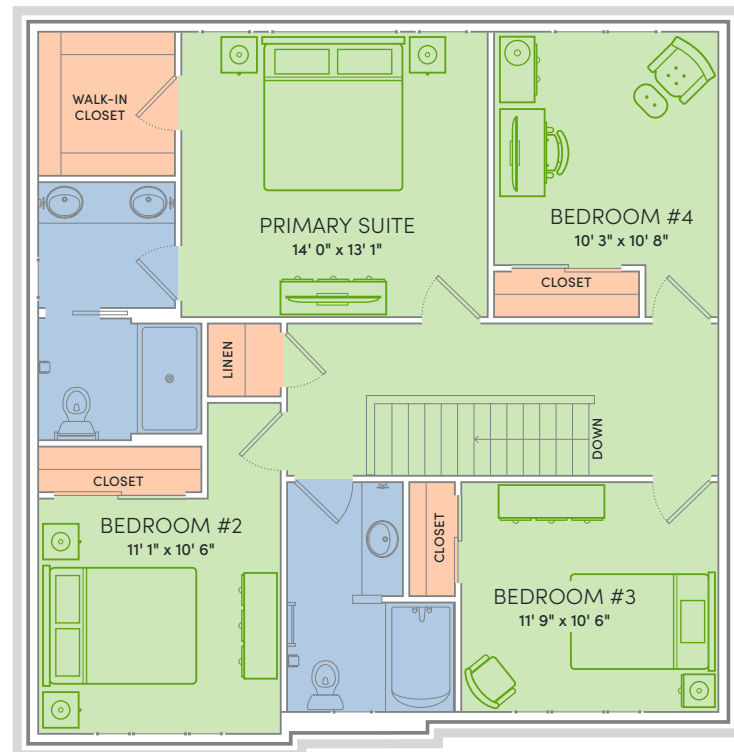
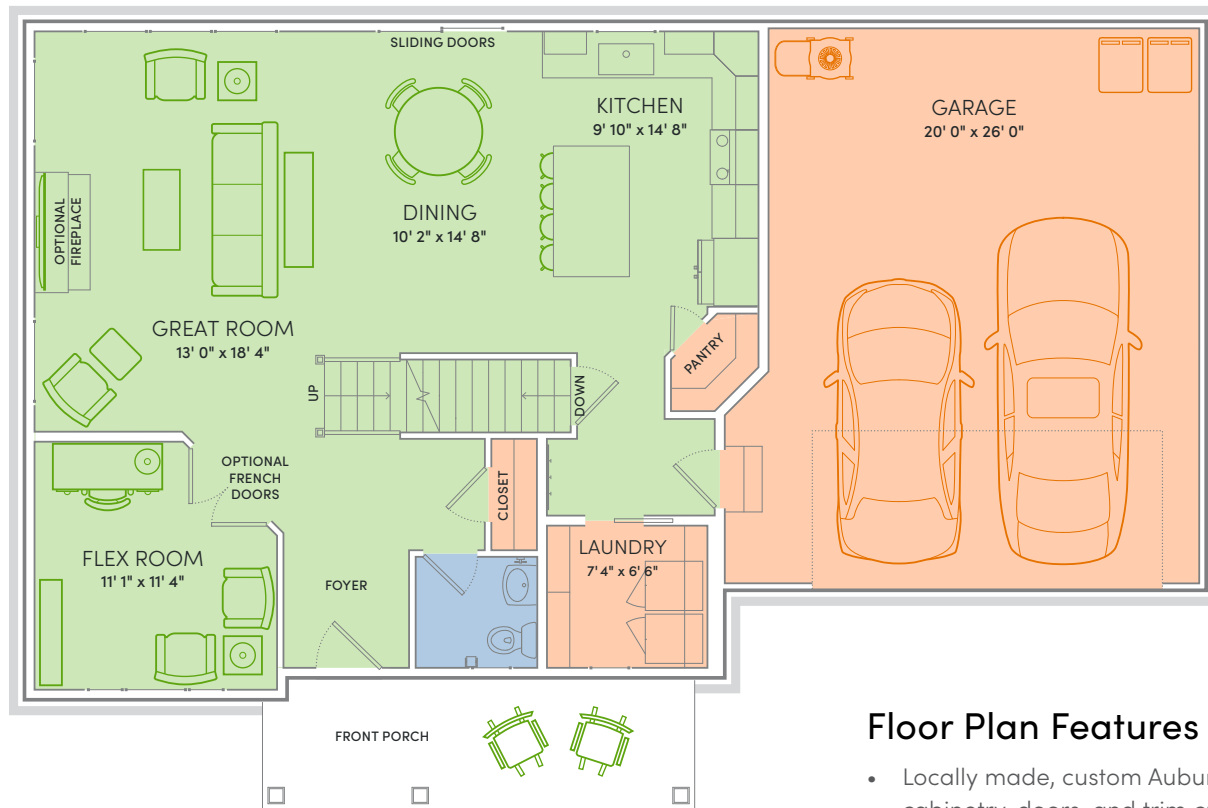


TRADITIONAL

CALLING ALL CULINARY CONNOISSEURS, AVID READERS, AND DESIGN DEVOTEES. Arrange the shelves with timeless Mark Twain classics or your most cherished finds. Fill the expansive kitchen with gourmet cookware and rare, beautifully crafted tools. With more space comes a more effortless kind of luxury—where everything has its place, and so do you. Meet The Hoffman.

*Exterior design, square footage and product selections may vary by elevation and neighborhood. Image is an artistic rendering of the home; colors and features may vary.

THE HOFFMAN - 4 BEDROOM PLAN



Floor Plan Features



- Locally made, custom Auburn Ridge® cabinetry, doors, and trim crafted to last
- Quality finishes from trusted brands like Kohler®, Moen®, and Shaw®
- Stylish kitchen with island and quartz countertops
- Durable luxury vinyl plank flooring in main living areas
- Designer lighting collections curated from Kichler® and Visual Comfort & Co.
- Painted solid-core doors for sound control
- Smart Home+ technology with integrated lighting control and built-in USB connectivity
- One-year warranty for added peace of mind
- Personalize your home with thousands of Design Studio options



ENERGY EXPERT CERTIFIED

Third-party tested to certify each home meets the high standards of the Quality 360® program.



The Hoffman | 3-BED PLAN

3 Beds | 2½ Baths | 2,045 Sq Ft*



PRAIRIE



COTTAGE



CRAFTSMAN



FARMHOUSE

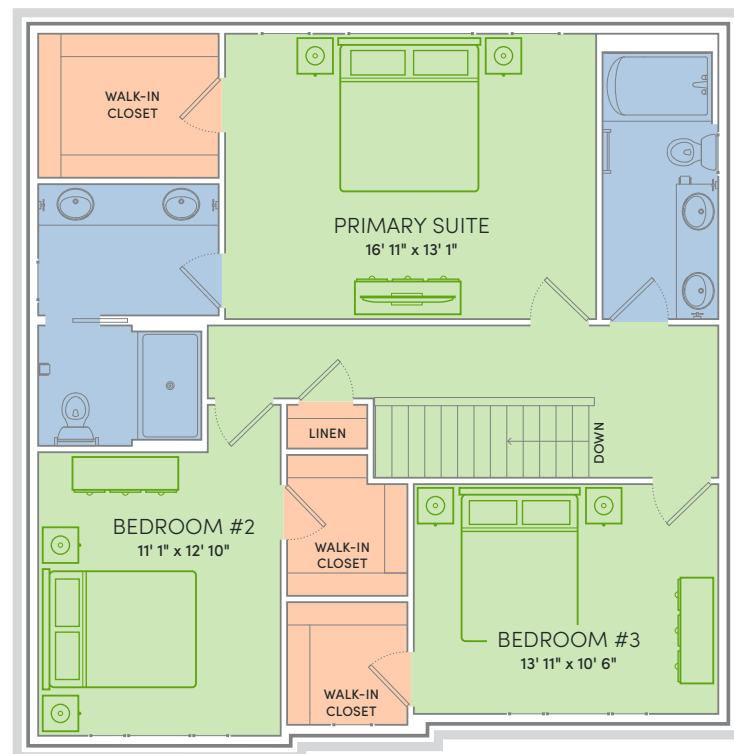
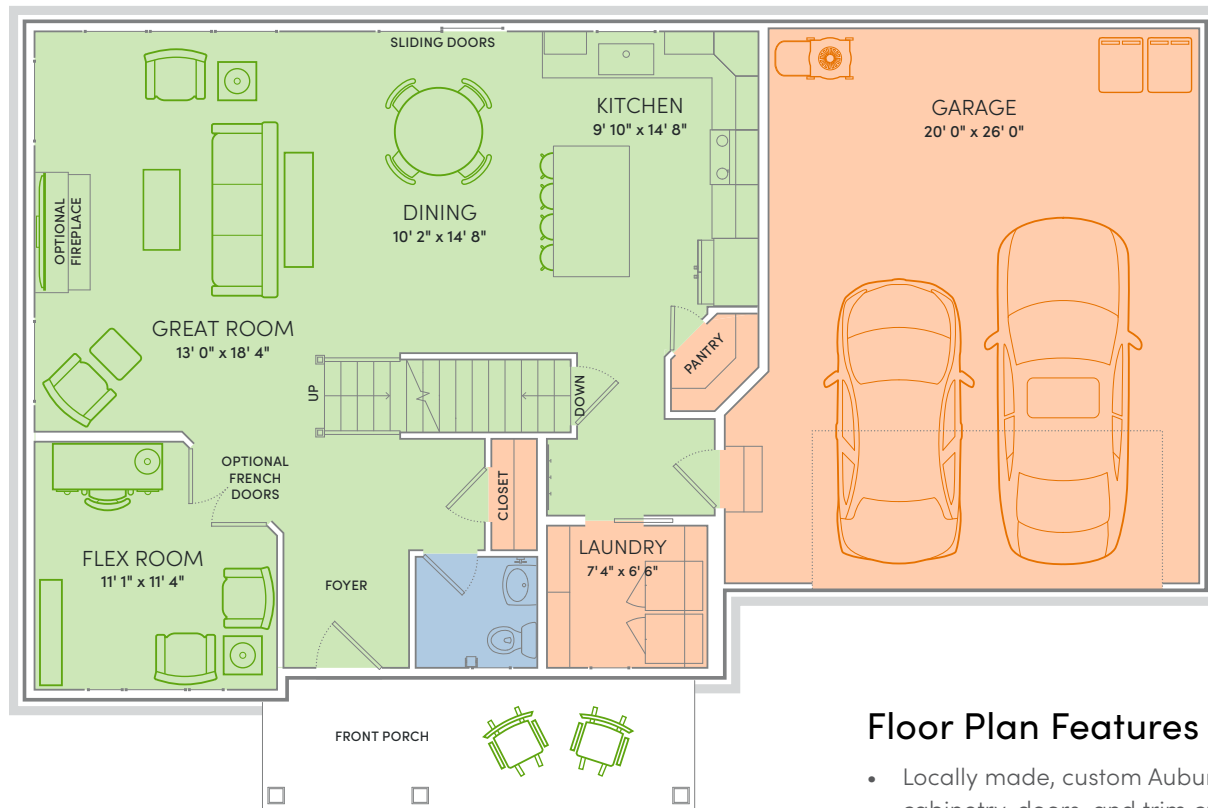


TRADITIONAL

CALLING ALL CULINARY CONNOISSEURS, AVID READERS, AND DESIGN DEVOTEES. Arrange the shelves with timeless Mark Twain classics or your most cherished finds. Fill the expansive kitchen with gourmet cookware and rare, beautifully crafted tools. With more space comes a more effortless kind of luxury—where everything has its place, and so do you. Meet The Hoffman.

*Exterior design, square footage and product selections may vary by elevation and neighborhood. Image is an artistic rendering of the home; colors and features may vary.

THE HOFFMAN - 3 BEDROOM PLAN



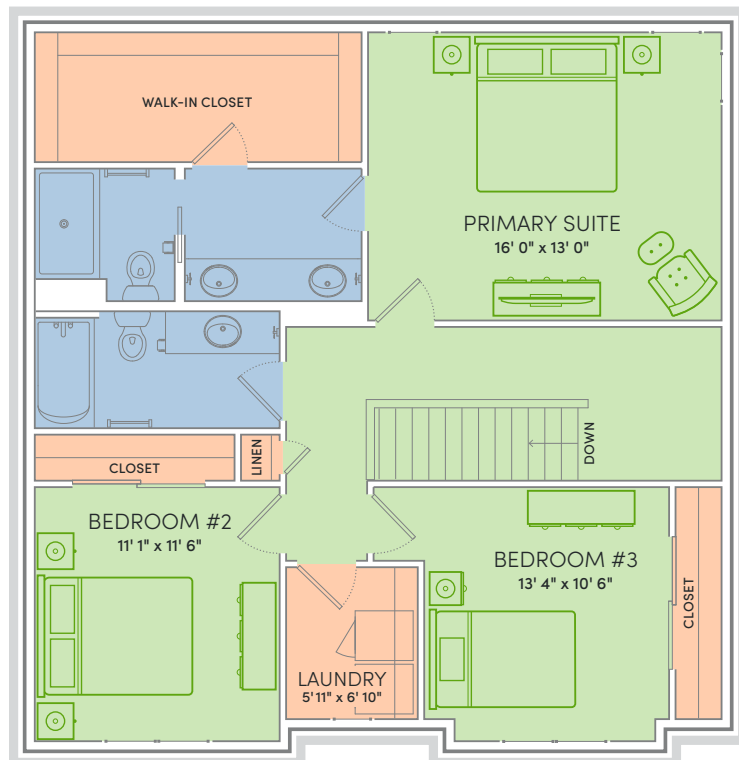
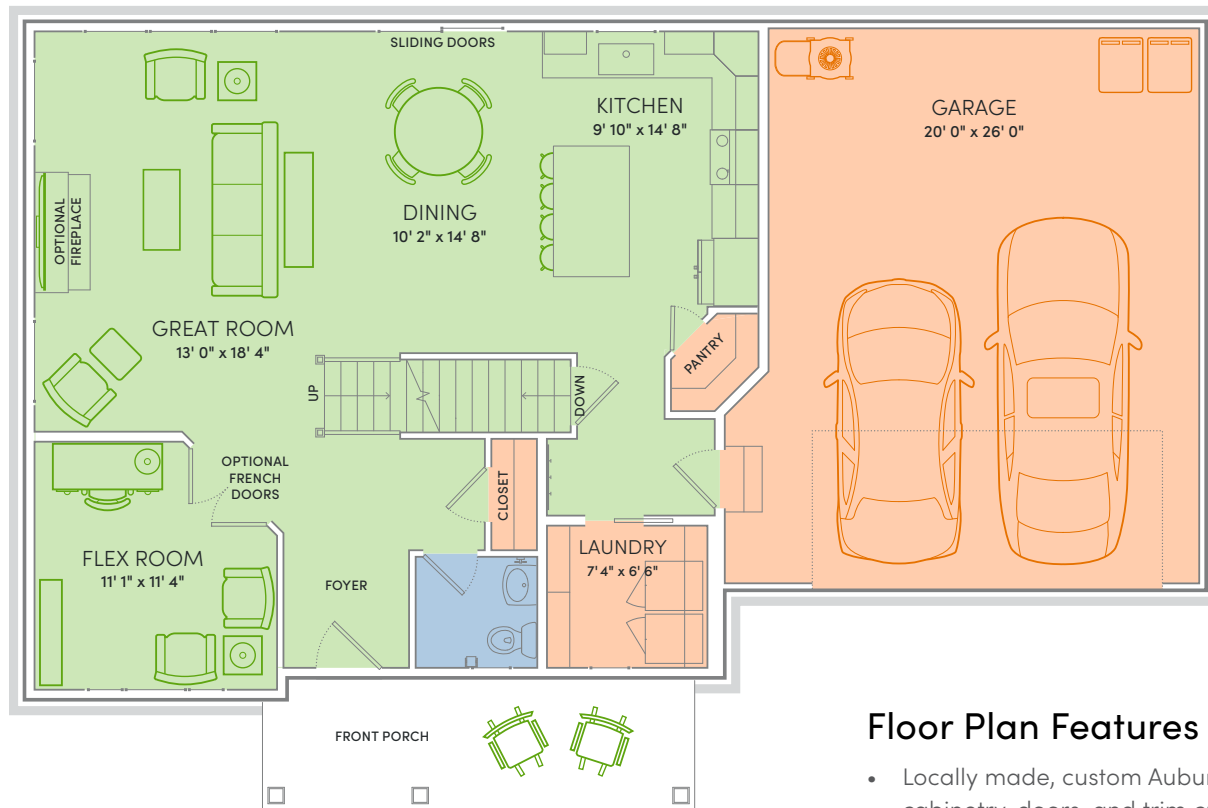
Floor Plan Features



- Locally made, custom Auburn Ridge® cabinetry, doors, and trim crafted to last
- Quality finishes from trusted brands like Kohler®, Moen®, and Shaw®
- Stylish kitchen with island and quartz countertops
- Durable luxury vinyl plank flooring in main living areas
- Designer lighting collections curated from Kichler® and Visual Comfort & Co.
- Painted solid-core doors for sound control
- Smart Home+ technology with integrated lighting control and built-in USB connectivity
- One-year warranty for added peace of mind
- Personalize your home with thousands of Design Studio options



ENERGY EXPERT CERTIFIED
Third-party tested to certify each home meets the high standards of the Quality 360® program.



Floor Plan Features



- Locally made, custom Auburn Ridge® cabinetry, doors, and trim crafted to last
- Quality finishes from trusted brands like Kohler®, Moen®, and Shaw®
- Stylish kitchen with island and quartz countertops
- Durable luxury vinyl plank flooring in main living areas
- Designer lighting collections curated from Kichler® and Visual Comfort & Co.
- Painted solid-core doors for sound control
- Smart Home+ technology with integrated lighting control and built-in USB connectivity
- One-year warranty for added peace of mind
- Personalize your home with thousands of Design Studio options



ENERGY EXPERT CERTIFIED

Third-party tested to certify each home meets the high standards of the Quality 360® program.