



The Olive

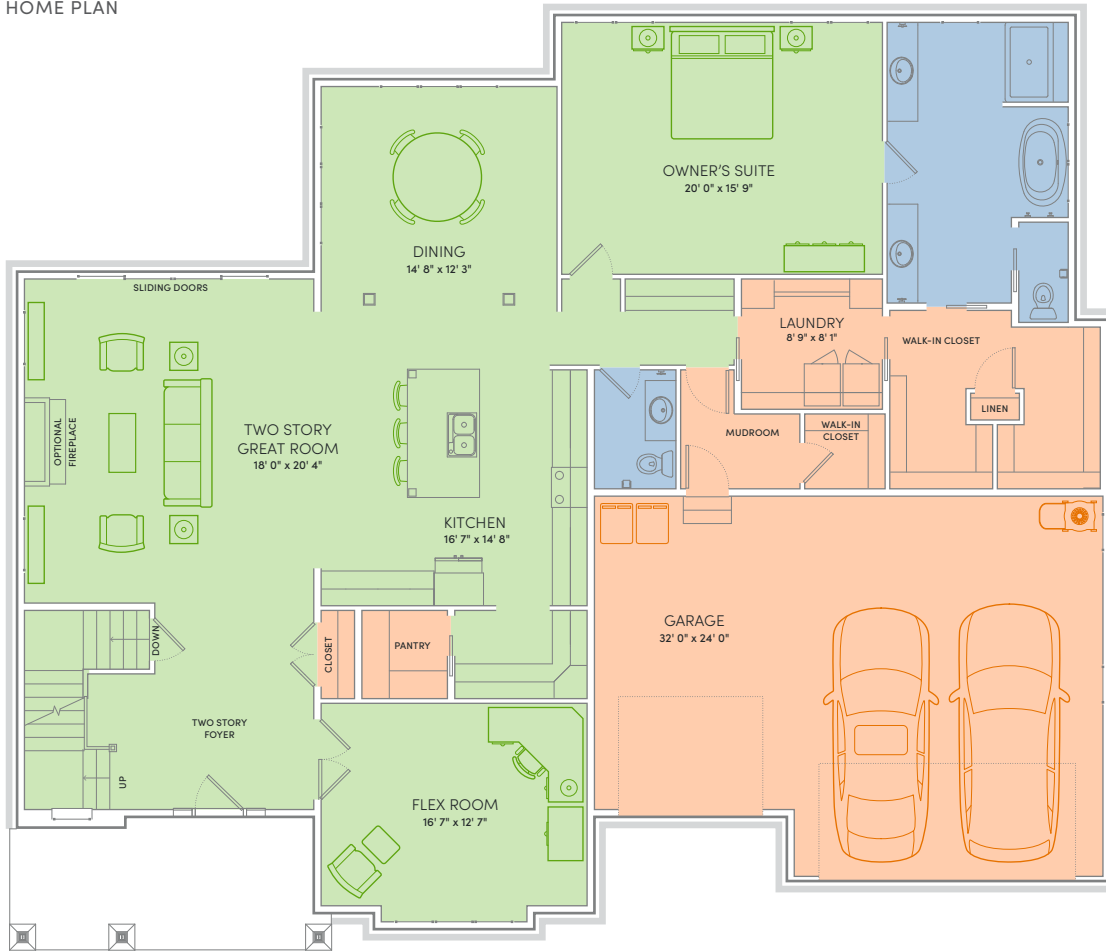
4 Beds | 3½ Baths | 4,061 Sq Ft*



*Exterior design, square footage and product selections may vary by elevation and neighborhood.

WE MAKE BUILDING EASY.® When you build a Veridian home, you get much more than a home designed around you and your dreams. You get the peace of mind that comes with nationally-recognized, award-winning, quality craftsmanship and energy efficiency. You get a home that's constructed using innovative building materials as well as the newest technology and building practices. The result is a high-performing, green and energy efficient home that's a healthier home for you and your pocketbook. And when you build with Veridian Homes, you build with a team of specifically trained experts who make homebuilding easy.

THE OLIVE HOME PLAN





WE'RE THRILLED TO INTRODUCE YOU TO THE OLIVE. The home plan that was selected for the debut of The Generous Home program. It has all the bells and whistles you'd expect from a Parade of Homes home, like a take-your-breath-away, two-story great room, a robust butler's pantry, custom Auburn Ridge cabinetry and more. We could go on and on forever boasting about all of the great features The Olive has to offer. But it's probably best if you just check them out for yourself.

Floor Plan Features

- Two-story great room and foyer
- Quartz or granite kitchen counters
- Flex room for office, crafting, music, etc.
- Butler's pantry for extra kitchen storage
- First floor owner's suite with walk-in closet and private bath
- Nine foot ceilings on first floor
- Custom Auburn Ridge® cabinetry
- First floor laundry and separate mudroom
- Three-car garage
- Large loft space open to great room
- Smart Home+ technology
- Energy expert certified
- Award-winning, high-performance home

Optional Features

- Tile shower or soaking tub with whirlpool options in secondary bathrooms
- Personalized closet systems
- Add additional square footage
- Finished lower level
- Additional green materials/products
- Personalize your home with thousands of options found within our Design Studio

For Signature Series home plans, please talk with your New Home Specialist to learn more about plan-specific details.





- Energy Expert Certified
- Insulated Entry Door
- Pella® Low-E Insulated Windows
- Insulated Garage Door
- Electronic Set-Back Thermostats
- Energy Efficient Led Lighting
- Kohler® Low Flow Fixtures
- Energy Star® Bath Fans
- Energy Efficient Air Conditioner, Furnace and Water Heater
- Radon Mitigation System
- 2x6 Framed Walls, 24 on Center
- Tyvek® House Wrap
- Advanced Air Sealing
- Spray Foam Insulation
- Weather Max® Adhesive Membrane

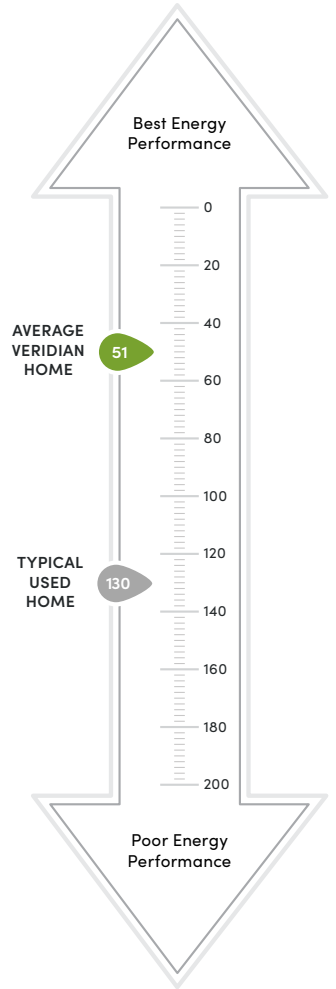


This Home is Quality 360® Certified

Every high-performance, Veridian home is tested by a third-party company, Perfect Environmental Performance (PEP). This testing allows us to individually certify each and every home we build meets the high standards of the Quality 360 program.

The Quality 360 program requires that all homes meet the highest standards in energy-efficiency, combustion safety, comfort and durability. This means that your dream home will not only look like a dream, but it will run like one too.

- Exceeding Expectations
- Better Energy Performance
- Heating/Cooling Loss Protection
- Peace of Mind



\$310 in savings every month!*

LOWER INDEX = HIGHER EFFICIENCY.

A HERS Index is the industry standard by which a home's energy efficiency is measured. A Veridian home receives a rating 56 HERS or better, averaging 51 HERS, compared a typical used home, which rates at 130 HERS – that's greater than a 70% increase in total energy performance. This means that your dream home will not only look like a dream, but it will run like one too.

*Estimated average monthly energy bill savings with The Olive. The costs were calculated using REM/Rate™ 12.97 and the HERS Score for the reference homes listed in the arrow chart and were published by RESNET, as compared to the typical used home. The typical used and new home scores were determined by the U.S. Department of Energy.

